

# High adherence to enhanced recovery pathway independently reduces major morbidity and mortality rates after colorectal surgery: a reappraisal of the iCral2 and iCral3 multicenter prospective studies

Marco Catarci<sup>a</sup>, Giacomo Ruffo<sup>b</sup>, Massimo Giuseppe Viola<sup>c</sup>, Felice Pirozzi<sup>d</sup>, Paolo Delrio<sup>e</sup>, Felice Borghif, Gianluca Garulli<sup>g</sup>, Pierluigi Marini<sup>h</sup>, Gianandrea Baldazzi<sup>i</sup>, and Marco Scatizzi<sup>j</sup>, on behalf of the Italian ColoRectal Anastomotic Leakage (iCral) study group

**Background:** Enhanced recovery after surgery (ERAS) offers lower overall morbidity rates and shorter hospital stay after colorectal surgery (CRS); high adherence rates to ERAS may significantly reduce major morbidity (MM), anastomotic leakage (AL), and mortality (M) rates as well.

**Methods:** Prospective enrollment of patients submitted to elective CRS with anastomosis in two separate 18- and 12-month periods among 78 surgical centers in Italy from 2019 to 2021. Adherence to ERAS pathway items was measured upon explicit criteria in every case. After univariate analysis, independent predictors of primary endpoints (MM, AL, and M rates) were identified through logistic regression analyses, presenting odds ratios (OR) and 95% confidence intervals.

**Results:** An institutional ERAS status was declared by 48 out of 78 (61.5%) participating centers. The median overall adherence to ERAS was 75%. Among 8,359 patients included in both studies, MM, AL, and M rates were 6.3%, 4.4%, and 1.0%, respectively. Several patient-related and treatment-related variables showed independently higher rates for primary endpoints: male gender, American Society of Anesthesiologists class III, neoadjuvant treatment, perioperative steroids, intra- and/or postoperative blood transfusions, length of the operation >180', surgery for malignancy. On the other hand, ERAS adherence >85% independently reduced MM (OR, 0.91) and M (OR, 0.25) rates, whereas no mechanical bowel preparation independently reduced AL (OR, 0.68) rates.

**Conclusions:** Among other patient- or treatment-related variables, ERAS adherence >85% independently reduced MM and M rates, whereas no mechanical bowel preparation independently reduced AL rates after CRS.

**Keywords:** Anastomotic Leakage; Colorectal surgery; ERAS; Major morbidity

## Introduction

Several meta-analyses of randomized controlled trials<sup>1-3</sup> on enhanced recovery after surgery (ERAS) in colorectal surgery (CRS) showed a marked reduction in overall morbidity rates

and length of stay. Different aspects of the ERAS program are vulnerable to noncompliance and this may explain wide differences in reported adherence rates to program items.<sup>4-6</sup> During the early phase of program implementation, the adherence rate

<sup>a</sup>General Surgery Unit, Sandro Pertini Hospital, ASL Roma 2; <sup>b</sup>General Surgery Unit, IRCCS Sacro Cuore Don Calabria Hospital, Negrar di Valpolicella (VR); <sup>c</sup>General Surgery Unit, Cardinale G. Panico Hospital, Tricase (LE); <sup>d</sup>General Surgery Unit, ASL Napoli 2 Nord, Pozzuoli (NA); <sup>e</sup>Colorectal Surgical Oncology, Istituto Nazionale per lo Studio e la Cura dei Tumori, "Fondazione Giovanni Pascale IRCCS-Italia," Napoli; <sup>f</sup>General and Oncologic Surgery Unit, Department of Surgery, Santa Croce e Carle Hospital, Cuneo; <sup>g</sup>General Surgery Unit, Infermi Hospital, Rimini; <sup>h</sup>General and Emergency Surgery Unit, San Camillo-Forlanini Hospital, Roma; <sup>i</sup>General Surgery Unit, ASST Ovest Milanese, Nuovo Ospedale di Legnano, Legnano (MI); and <sup>j</sup>General Surgery Unit, Santa Maria Annunziata Hospital, Firenze

Marco Catarci is the study coordinator.

The authors declare that they have no conflicts of interest with regard to the content of this report.

This research received no specific grant from any funding agency in the public, commercial, or not-for-profit sectors. Medtronic SI, Italy provided unconditioned support to the organization of three iCral2 study investigator meetings, held in Rome, Italy – October 2018, in Matera, Italy – June 2019, and in Bologna, Italy – October 2019.

Supplemental digital content is available through direct URL citations in the HTML and PDF versions of this article ([journals.lww.com/jisa](http://journals.lww.com/jisa)).

Corresponding Author. Address: Marco Catarci, MD, FACS, Direttore U.O.C. Chirurgia Generale - Ospedale "Sandro Pertini" – ASL Roma 2, Via dei Monti Tiburtini, 385; 00157 Roma, Italy, E-mail: [marco.catarci@aslroma2.it](mailto:marco.catarci@aslroma2.it) (M. Catarci).

Copyright © 2023 The Authors. Published on behalf of the Associazione Chirurgi Ospedalieri Italiani and Wolters Kluwer. This is an open-access article distributed under the terms of the Creative Commons Attribution-Non Commercial-No Derivatives License 4.0 (CCBY-NC-ND), where it is permissible to download and share the work provided it is properly cited. The work cannot be changed in any way or used commercially without permission from the journal.

Journal of the Italian Surgical Association (2023) 43:2

Received: 22 January 2023; Accepted 21 March 2023

Published online 26 April 2023

DOI: 10.1097/IA9.000000000000024

to program items rarely exceeds 50%,<sup>7</sup> needing to reach at least 70%<sup>8</sup> to significantly improve outcomes. In this context, the relative benefit of any specific item of the program and the role of overall, preoperative, intraoperative, and postoperative adherence to the program itself is still debated.<sup>9–11</sup>

More recent observational studies showed that a high adherence rate to ERAS items may have a significant impact also on major complications, anastomotic leakage (AL), and mortality.<sup>12–15</sup> However, the previous multicenter prospective study by the Italian ColoRectal Anastomotic Leakage (iCral2) study group<sup>16</sup> failed to detect any significant association between institutionalization and/or adherence rates to ERAS and these endpoints. Having recently completed a third multicenter prospective study (iCral3) designed to test the impact of adherence to ERAS on patient-reported outcomes and return to intended oncologic therapy,<sup>17</sup> using a protocol similar to the previous study, the iCral study group decided to reappraise this issue by merging the results of the two studies.

## Methods

Both studies were based on prospective voluntary enrollment in Italy, carried out from January 2019 to June 2020 in 38 surgical centers (iCral2), and from October 2020 to September 2021 in 76 surgical centers (iCral3). Seventy-eight centers were involved in 1 (42 centers) or both (36 centers) studies. A subgroup analysis of the 36 centers involved in both studies (data not shown) disclosed no time-related change in ERAS adherence rates and outcomes.

All patients submitted to elective CRS with anastomosis were assessed for inclusion according to explicit inclusion/exclusion criteria shared by the two studies (Table 1). The iCral2 study excluded patients with a protective stoma proximal to the anastomosis; conversely, these cases were included in the iCral3 study; delayed urgency resections were enrolled in both studies, being defined >48 hours from admission in iCral2 and >24 hours from admission in iCral3 studies.

All data were accounted for on an individual patient basis. The only center-related variables were: (1) enrollment volume, based on the median number of enrolled cases per month of accrual, defined as high volume (≥4 cases/month) or low volume (<4 cases/month) and (2) the self-declared institutional ERAS center status, defined as the existence of a locally implemented ERAS team and protocol, supported by a specific resolution of the hospital/company strategic management, present in 48 (61.5%) participating centers.

All data of the included patients were prospectively uploaded into a web-based database via an electronic case report form, specifically designed for both studies, protected by access credentials for each center/investigator. Continuous and discrete variables related to biometric data, patient-related risk factors, indication and type of surgical procedure, adherence to the ERAS items, and outcomes were recorded. Quality control of data for consistency, plausibility, and completeness was performed on each single record by local investigators and subsequently validated by the study coordinator, resolving any discrepancy

through strict cooperation. The ERAS protocol included 21 items in iCral2, adapted from the 2013 ERAS Society guidelines.<sup>18</sup> They were 26 in iCral3, adapted from the 2019 ERAS society<sup>19</sup> and national<sup>20</sup> guidelines. For the present analysis, we selected 20 items shared by the two studies, with their specific adherence criteria (Table 2): adherence to the ERAS protocol was calculated both based on all the 20 items and on 16 pre- and intraoperative items (excluding postoperative items such as early mobilization, early oral feeding, early removal of foley catheter and predischage check).<sup>7</sup> During the perioperative period patients were examined daily by local investigators, who were free to decide on complementary imaging and any further action according to their local criteria.

## Outcomes

During the follow-up, planned on an outpatient basis for 8 weeks after hospital discharge, any adverse event was recorded and graded according to Clavien-Dindo<sup>21,22</sup> and the Japanese Clinical Oncology Group (JCOG) extended criteria,<sup>23</sup> as well as unplanned readmission, reoperation, death, and overall length of stay (LOS, days), inclusive of any readmission. AL was defined and graded according to the international<sup>24</sup> consensus. All the outcomes were calculated at 60 days after surgery.

Primary endpoints were AL, major morbidity (MM, defined as any adverse event grade >II), and mortality (M, any death) rates; secondary endpoints were overall morbidity (defined as any adverse event), surgical site infections (SSIs, according to the definitions of the Centers for Disease Control and Prevention<sup>25</sup>), infectious morbidity, readmission, reoperation rates, and overall LOS.

## Statistical analysis

All quantitative values were expressed as mean ± standard deviation and 95% confidence intervals (95% CI), categorical data with percentage frequencies, and discrete variables with median and interquartile range (IQR).

Descriptive and univariable analyses of the whole cohort according to the self-declared institutional ERAS center status were performed using cross-tabulations with chi-square and/or Fisher tests for categorical data, Mann–Whitney U test or Kruskal–Wallis test for continuous and discrete variables for all the endpoints.

Quantitative variables such as age (years) and operation length (minutes) were categorized below or above their median values. Other variables were categorized according to predefined ranges: nutritional status measured through the mini nutritional assessment—short form (MNA-SF,<sup>26</sup>) ≤11, indicating a potential or clear malnutrition status; body mass index (BMI, kg/m<sup>2</sup>) ≤25.0, 25.1–30.0 and > 30.0. Surgical procedures were categorized as standard (anterior resection, right colectomy, and left colectomy) versus nonstandard (splenic flexure resection, transverse colectomy, Hartmann’s reversal, subtotal and total colectomy, and other) resections. ERAS adherence rates, calculated

**Table 1**

### Inclusion and exclusion criteria shared by the two studies

|                    |   |
|--------------------|---|
| Inclusion criteria | <ul style="list-style-type: none"> <li>• Patients undergoing colorectal resection with anastomosis (laparoscopic, robotic, open, or converted approach), including Hartmann’s reversals</li> </ul>  |
| Exclusion criteria | <ul style="list-style-type: none"> <li>• American Society of Anesthesiologists (ASA) class I, II, or III</li> <li>• Elective or delayed urgency (&gt;24–48 hours from admission) surgery</li> <li>• Patient’s written informed consent for inclusion in the study and processing of sensitive data</li> <li>• Pregnancy</li> <li>• Hyperthermic chemotherapy (HIPEC) for carcinomatosis</li> <li>• Incomplete data</li> </ul> |

**Table 2**  
**Definition of adherence to ERAS items shared by the two studies**

| Item   | Adherence criteria  |
|--|---|
| Prehabilitation                                | All patients showing MNA-SF <12 (malnourished or suspected for malnutrition) and BMI >30 (obesity) receive specific nutritional consultation. Patient receives a standard protocol of physical activity to be accomplished in the preoperative period. Patient and his familiars/caregivers are screened for anxiety/depression concerning diagnosis and related procedure; if present, psychological consultation is warranted |
| Counseling                                     | Patient and his familiars/caregivers receive full information and suggestions regarding perioperative program from the surgeon, anesthesiologist, and case-manager  |
| Preoperative immunonutrition                   | Patient is administered Impact Oral (Nestlé Health Science, Italy) 330 ml per os, three briks per day during 5 days or two bricks per day during 7 days preceding surgery   |
| Antithrombotic prophylaxis                     | Patient receives graduate compression stockings and/or pneumatic compression device, together with prophylaxis with low molecular weight heparin during the perioperative period, to be extended up to 28 days after surgery in case of malignancy  |
| Antibiotic prophylaxis                         | Patient is administered i.v. antibiotic 30–60 minutes before incision, according to local protocols   |
| No mechanical bowel preparation                | No routine mechanical bowel preparation is used, except in case of the anticipated need for covering stoma  |
| Oral carbohydrates load & preoperative fasting | Carbohydrates-rich beverage (12.5% maltodextrins, PreOp, Nutricia Italy) is given preoperatively (800 ml on the evening before surgery and 400 ml 2–3 hours before surgery). Preoperative fasting is limited to 2 hours for clear liquids (water, coffee, or tea) and to 6 hours for milk and solid food  |
| No premedication                               | No long- or medium-action sedatives. Short and ultra-short-acting sedatives (e.g. lorazepam, midazolam, methohexital, dexmedetomidine, ketamine) are allowed before performing spinal, epidural, or loco-regional anesthesia  |
| PONV prophylaxis                               | Postoperative nausea/vomiting (PONV) prophylaxis is administered according to individual risk assessment (Apfel score) through a multimodal approach  |
| Normothermia                                   | Body temperature is monitored during surgery, utilizing fluid warmers and/or thermic blankets as necessary  |
| Standard anesthesia protocol                   | General anesthesia through short-acting anesthetics, cerebral activity monitoring to enhance recovery and to reduce postoperative delirium, anesthesia level monitoring, and complete reversal of neuromuscular blockade  |
| Fluid management                               | Intraoperative restrictive fluid therapy (defined as maintenance fluids at <2 ml/kg/h) or goal-oriented fluid therapy (stroke volume)   |
| Multimodal analgesia                           | Use of more than two drugs or analgesia strategies (TAP-block or spinal anesthesia for minimally invasive surgery; thoracic epidural anesthesia for open surgery) to reduce the use of opiates  |
| Minimally invasive surgery                     | Patient submitted to laparoscopic, robotic, or video-assisted surgery (conversions to open surgery included on an intention-to-treat basis)   |
| No nasogastric tube                            | Nasogastric tube, if used, is removed at the end of surgery   |
| No drain                                       | No drain is placed in the abdominal cavity (pelvic drain allowed for pelvic surgery with low colorectal anastomosis)  |
| Bladder catheter                               | Urinary catheter removed on POD 1 (up to POD 2 in case of pelvic surgery)   |
| Early mobilization                             | Patient receives passive mobilization on POD 0, active mobilization on POD 1  |
| Early oral feeding                             | Patient receives liquid oral diet starting 6 hours after surgery and semisolid diet starting on POD 1   |
| Predischarge check                             | Patient is checked just before discharge at home concerning adequate oral intake, bowel function, adequate pain control, active mobilization, no clinical/serological evidence of any postoperative complication, full agreement to go home   |

on 20-items and 16-items, were categorized in quartiles, below or equal versus above the median values, and considering the 4th versus 1st–3rd quartiles.

All variables showing significance at univariate analysis were tested for variable multicollinearity<sup>27</sup> through a multiple linear regression model measuring the variance inflation factor (VIF) and then included (excluding those with VIF >4) in a logistic regression multivariate analysis model for primary endpoints, weighted for the variable with the highest VIF below the threshold, presenting odds ratio (OR) and 95% CI.

For all statistical tests, the significant level was set at  $P < 0.05$ . All analyses were conducted using StatsDirect statistical software (StatsDirect Ltd., UK).

**Ethics**

Both studies were conducted according to the Declaration of Helsinki and the principles of the guidelines for good clinical practice E6 (R2). The study protocols were approved by the ethics committee of the coordinating center (Marche Regional Ethics Committee—CERM—2018/334 released on November 28, 2018, for iCral2; CERM—2020/192 released on July 30, 2020, for iCral3) and then registered at ClinicalTrials.gov (NCT03771456 for iCral2 and NCT04397627 for iCral3). Subsequently, all other centers were authorized to participate from their local ethics committee. Both studies followed the Strengthening the Reporting of Observational Studies in Epidemiology reporting guideline for cohort studies.<sup>28</sup> Individual participant-level anonymized datasets are available for both studies upon reasonable request by contacting the study coordinator.

**Results**

**Outcome data**

A total of 12,801 potentially eligible cases were assessed, of which 8,359 (65.3%) were included in the present analysis (Figure 1). Median (IQR; range) number of enrolled patients per single center was 62 (42–140; 12–674). After a median (IQR; range) follow-up of 65 days (55–100; 0–378), 3,171 adverse events (Table 3) were recorded in 2,321 patients (overall morbidity rate 27.8%), of which 774 (24.2%) were Clavien-Dindo grade >II in 523 patients (MM rate 6.3%). There were 366 ALs (rate 4.4%), diagnosed after a median (IQR; range) of 5 (3–10; 1–99) days. AL diagnosis was established by intravenous contrast computed tomography scan in 149 (40.8%), clinical criteria in 129 (35.3%), endoluminal contrast computed tomography scan in 68 (18.7%), endoluminal contrast enema in 11 (2.7%), and gross findings at reoperation in the remaining 9 cases (2.5%). Regarding AL grading, a grade A leak was recorded in 44 cases (12.0%), grade B in 62 (17.0%), and grade C in the remaining 260 cases (71.0%). There were 88 deaths (mortality rate 1.0%). SSI and infectious morbidity rates were 4.6% and 6.3%, respectively. Median overall LOS (IQR; range) was 6 (4–8; 0–108) days, with 288 re-admissions (3.4%) and 429 re-operations (5.1%).

**ERAS institutionalization, adherence, and outcome data**

The median (IQR) overall ERAS adherence rate (Figure. 2 and Table 4) was 75% (55–85) considering 20 items, and 75% (56.2–87.5) considering 16 items. Patients treated within a self-declared institutional ERAS center had a significantly higher overall and single-item ERAS adherence rate,

Downloaded from https://journals.lww.com/jisa by BIDMf5ePHKav1zEoum1tQIN4a+kLlHEZg5sH04XXM0h0CwCX1AAV nYQp/IIQIHID33D00dRy7TVSfACI3VCA/OAVpDDa8K2+Y6H515KE= on 12/02/2024

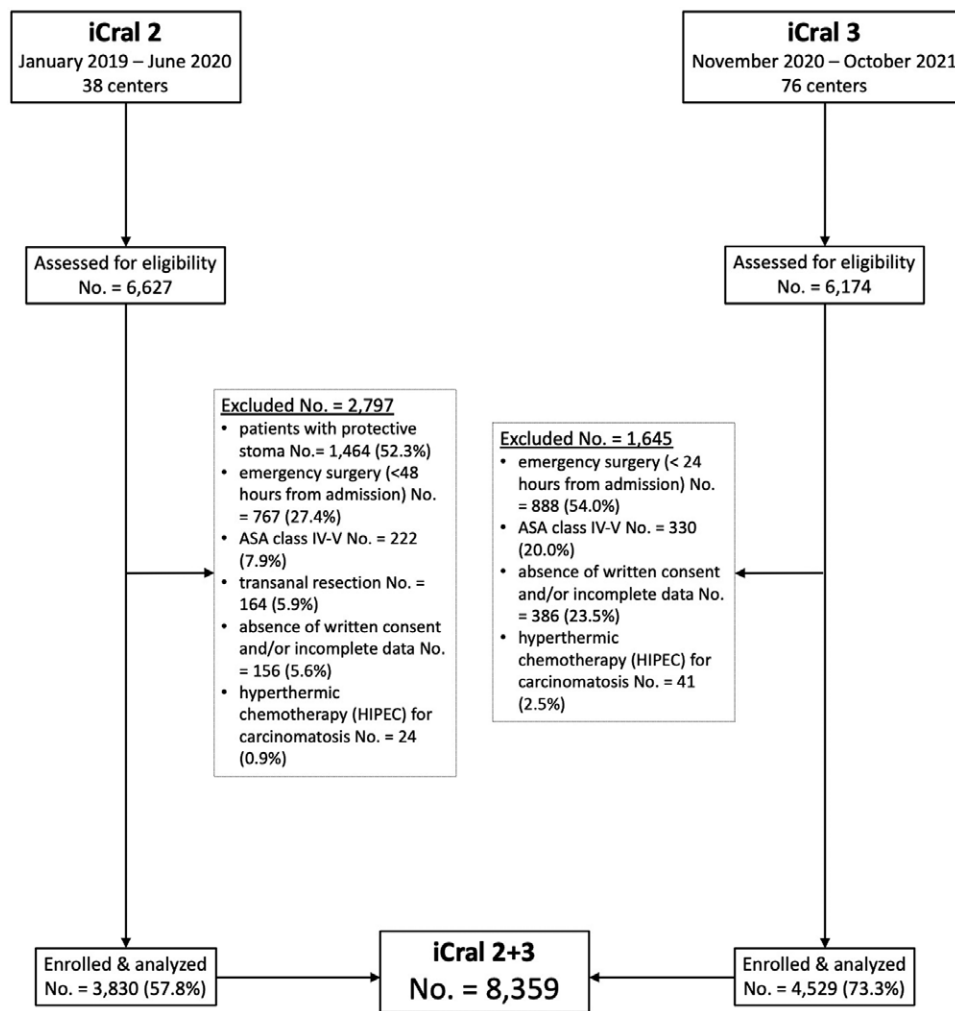


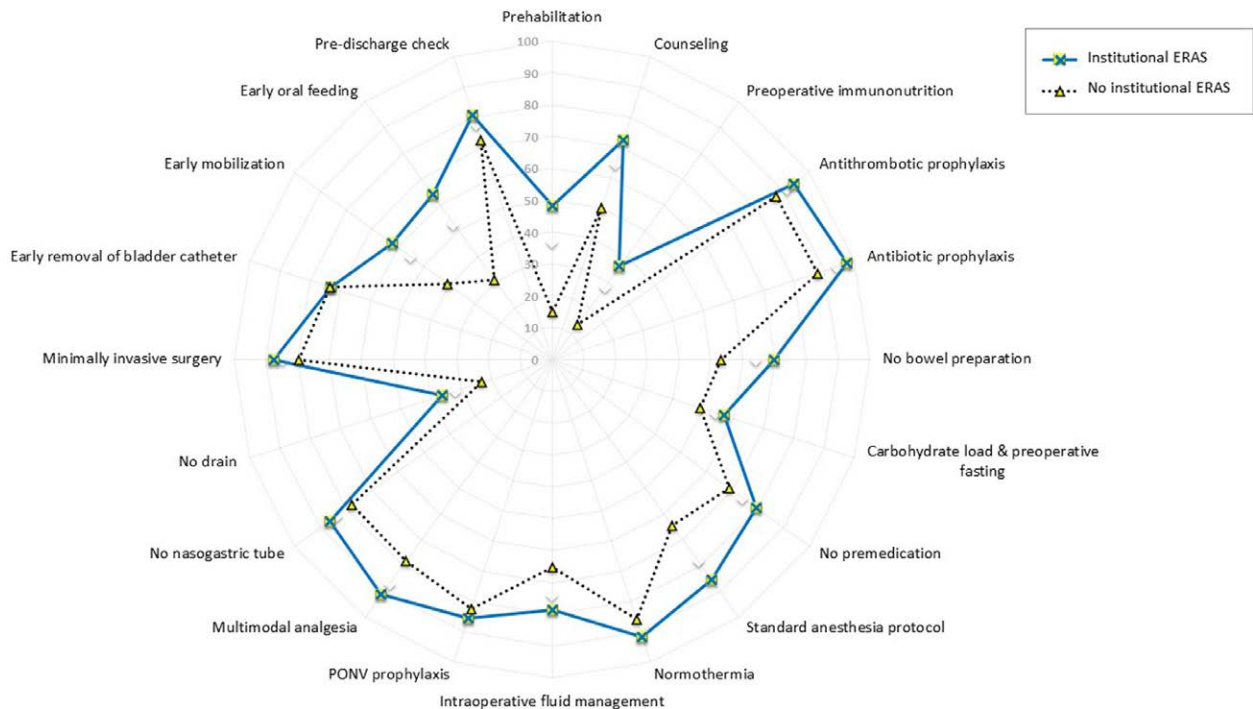
Figure 1. Flowchart of iCral2 and iCral3 studies according to the Strengthening the Reporting of Observational Studies in Epidemiology (STROBE) Statement guidelines.

**Table 3**  
Adverse events and grading

| Clavien-Dindo & JCOG grade           | I   | II    | IIIa | IIIb | IVa | IVb | Total |
|--------------------------------------|-----|-------|------|------|-----|-----|-------|
| Anastomotic leakage                  | 16  | 56    | 34   | 218  | 30  | 12  | 366   |
| Surgical site infections             | 124 | 131   | 13   | 13   | 0   | 0   | 281   |
| Abdominal collection/abscess         | 4   | 30    | 53   | 15   | 0   | 2   | 104   |
| Small bowel obstruction              | 9   | 35    | 4    | 62   | 2   | 0   | 112   |
| Anastomotic bleeding                 | 58  | 52    | 40   | 3    | 1   | 0   | 154   |
| Abdominal bleeding                   | 5   | 35    | 7    | 36   | 4   | 2   | 89    |
| Small bowel perforation              | 0   | 0     | 1    | 19   | 2   | 0   | 22    |
| Deep wound dehiscence                | 5   | 8     | 3    | 4    | 0   | 0   | 20    |
| Trocar/wound site bleeding           | 20  | 7     | 2    | 3    | 0   | 0   | 32    |
| Anemia                               | 40  | 366   | 1    | 2    | 0   | 1   | 410   |
| Paralytic ileus                      | 173 | 169   | 1    | 3    | 0   | 0   | 346   |
| Fever                                | 97  | 171   | 3    | 3    | 0   | 0   | 274   |
| DVT/pulmonary embolism               | 1   | 17    | 1    | 0    | 3   | 5   | 27    |
| Neurologic                           | 25  | 17    | 1    | 1    | 0   | 1   | 45    |
| Pneumonia & pulmonary failure        | 14  | 89    | 8    | 2    | 21  | 9   | 143   |
| Urinary retention                    | 62  | 47    | 2    | 0    | 0   | 0   | 111   |
| Urinary tract infection              | 6   | 22    | 1    | 0    | 0   | 0   | 29    |
| Acute renal failure                  | 25  | 28    | 3    | 0    | 6   | 2   | 64    |
| Acute mesenteric ischemia            | 0   | 0     | 0    | 4    | 0   | 1   | 5     |
| Acute peptic ulcer/erosive gastritis | 0   | 4     | 4    | 1    | 0   | 0   | 9     |
| Other                                | 195 | 152   | 27   | 21   | 9   | 12  | 416   |
| Total                                | 895 | 1,502 | 213  | 412  | 91  | 58  | 3,171 |

DVT indicates deep venous thrombosis; JCOG, Japanese Clinical Oncology Group.

Downloaded from http://journals.lww.com/jisa by BMDMf5ePHKav1zEoum1tIQINda+kLHeZg5sH04XMM0h0CwCX1AAW nYQp/1QIHID33D00dRfY7TVSfACI3VCA/OAVpDDa8K2+YabH515KE= on 12/02/2024



**Figure 2.** Adherence rates (%) to ERAS items in the whole population (Overall) and according to the presence or absence of an institutional ERAS pathway.

the only exception being the early removal of bladder catheter. Concerning patient-related variables, patients treated in a self-declared institutional ERAS center had significantly lower median age and median BMI, lower rates of male gender, American Society of Anesthesiologists (ASA) class III cases, and diabetes. Concerning treatment-related variables, they showed a significantly lower rate of nonstandard resections, surgery for malignancy, and open or robotic surgery; on the other hand, they had significantly more cases treated in a high-volume center and significantly longer operative time. No significant differences regarding outcomes were recorded, the only exception being a significantly higher overall morbidity rate and shorter LOS in patients treated in a self-declared institutional ERAS center. When measured on a 20-item base, ERAS adherence quartiles were significantly linked to all the endpoints, except AL, readmission, and reoperation rates (Figure 3); when measured on a 16-items base, they were significantly linked to mortality, SSIs, and infectious morbidity rates (Table 5).

**Primary endpoints analyses**

MM rates (Table 6) were independently higher by (Figure 4) male sex (OR, 1.41; 95% CI, 1.14–1.74;  $P = 0.002$ ), ASA class III (OR, 1.36; 95% CI, 1.07–1.71;  $P = 0.011$ ), neoadjuvant therapy (OR, 1.65; 95% CI, 1.19–2.28), intra- and/or postoperative blood transfusions (OR, 5.54; 95% CI, 4.25–7.24;  $P < 0.0001$ ), and operation length >180 minutes (OR, 1.54; 95% CI, 1.25–1.90;  $P < 0.0001$ ). They were independently lower by ERAS 20-items adherence >85% (OR, 0.84; 95% CI, 0.72–0.98;  $P = 0.028$ ).

AL rates (Table 7) were independently higher by (Figure 5) male sex (OR, 1.32; 95% CI, 1.09–1.58;  $P = 0.004$ ), ASA class III (OR, 1.30; 95% CI, 1.07–1.58;  $P = 0.008$ ), neoadjuvant treatment (OR, 1.59; 95% CI, 1.19–2.13;  $P = 0.002$ ), intra- and/or postoperative blood transfusions (OR, 5.36; 95% CI, 4.26–6.73;  $P < 0.0001$ ), and length of the operation >180' (OR, 1.41; 95% CI, 1.18–1.70;  $P < 0.001$ ). They were independently lower in patients with no mechanical bowel preparation (OR, 0.68; 95% CI, 0.54–0.86;  $P = 0.001$ ).

Mortality rates (Table 8) were independently higher (Figure 6) in ASA class III patients (OR, 1.96; 95% CI, 1.06–3.62;  $P = 0.031$ ) and patients receiving perioperative steroids (OR, 4.33; 95% CI, 1.55–12.06;  $P = 0.005$ ); they were independently lower in patients with normal nutritional status (MNA-SF >11; OR, 0.40; 95% CI, 0.24–0.68;  $P = 0.0006$ ), and ERAS 20-items adherence rate >85% (OR, 0.25; 95% CI, 0.07–0.82;  $P = 0.022$ ).

A complete description of all variables included in univariate analyses for primary endpoints is available as ematerial; <http://links.lww.com/IA9/A4>.

**Discussion**

The reappraisal and merging of the two multicenter observational prospective iCral studies<sup>16,17</sup> allowed to achieve a noteworthy cohort of more than 8,000 patients treated in 78 Italian surgical units over 30 months, representing, by far, one of the largest prospective multicenter cohorts used to investigate the effects of a self-declared ERAS status and ERAS adherence rates on early outcomes after CRS in a nationwide sample.

The first finding of this merged analysis clearly demonstrates that more than 20 years after its inception, there still is clear room for improvement of adherence rates to the ERAS pathway after CRS. In particular (Figure 2), even the most basic elements of perioperative care, such as antibiotic and antithrombotic prophylaxis, showed an elevated (>90%) but far from perfect compliance; several other items showed an overall suboptimal (<70%) adherence rate: prehabilitation, counseling, immunonutrition, no bowel preparation, carbohydrates load and 2–6 hours fasting, no drain, early mobilization, and early oral feeding.

This finding could be expected for some of these. Given the heterogeneity of studies to date, the role of prehabilitation for specific patients and surgical procedures needs to be confirmed by high-quality randomized studies.<sup>29</sup> More recent evidence<sup>30,31</sup> clearly indicates preoperative immunonutrition for selected (malnourished and/or oncologic) patients and not for all comers. Preoperative carbohydrate load results in reduced postoperative insulin resistance, anxiety, discomfort, nausea, and hospital

Downloaded from <http://journals.lww.com/jisa> by BHD/MI/EP/PH/KAV/1Z/EUM/TI/Q/N/4+K/L/HE/Z/g/s/H/04/X/M/0h/Cw/CX/1AAV nYQp/1Q/1H/D3/3D00/dR/y/17/vS/F/AC/3/C4/O/AV/p/DDa8K2+YabH5/15KE= on 12/02/2024

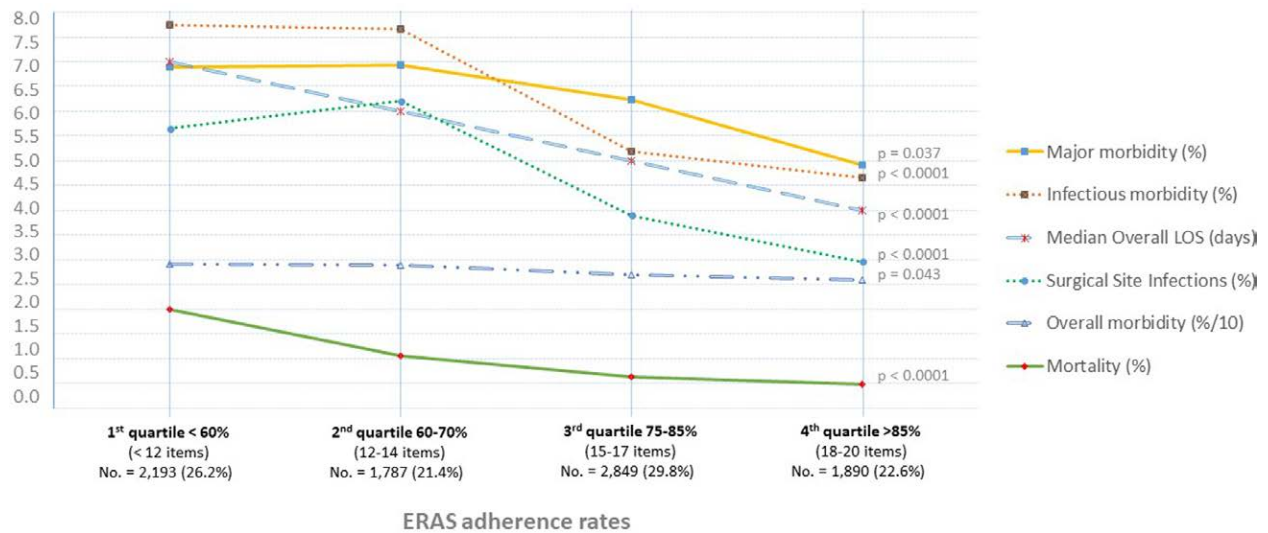
**Table 4**

**Study variables (patients, procedures, and ERAS items) and outcomes in the whole population and according to the presence or absence of an institutional ERAS**

| Patients' variables                              | Overall (No. = 8,359) | Institutional ERAS (No. = 5,502) | No Institutional ERAS (No. = 2,857) | P       |
|--|-----------------------|----------------------------------|-------------------------------------|---------|
|  | No. (%)               | No. (%)                          | No. (%)                             |         |
| Age, median (IQR), years                         | 69 (58–78)            | 69 (57–78)                       | 69 (60–77)                          | 0.032   |
| Male gender                                      | 4298 (51.4)           | 2747 (49.9)                      | 1551 (54.3)                         | 0.0002  |
| Body mass index, median (IQR), Kg/m <sup>2</sup> | 25.13 (22.66–27.78)   | 24.82 (22.32–27.68)              | 25.71 (23.18–28.30)                 | <0.0001 |
| ASA class I–II                                   | 5421 (64.8)           | 3687 (67.0)                      | 1734 (60.7)                         | <0.0001 |
| Diabetes   | 1195 (14.3)           | 714 (13.0)                       | 481 (16.8)                          | <0.0001 |
| Chronic renal failure                            | 366 (4.4)             | 238 (4.3)                        | 128 (4.5)                           | 0.743   |
| Dialysis   | 17 (0.2)              | 12 (0.2)                         | 5 (0.2)                             | 0.873   |
| Perioperative steroids                           | 147 (1.8)             | 99 (1.8)                         | 48 (1.7)                            | 0.694   |
| Neoadjuvant therapy                              | 618 (7.4)             | 398 (7.2)                        | 220 (7.7)                           | 0.439   |
| Preoperative blood transfusion(s)                | 464 (5.6)             | 301 (5.5)                        | 163 (5.7)                           | 0.657   |
| Intra- and/or postoperative blood transfusion(s) | 559 (6.7)             | 354 (6.4)                        | 205 (7.2)                           | 0.198   |
| Chronic liver disease                            | 85 (1.0)              | 55 (1.0)                         | 30 (1.0)                            | 0.827   |
| MNA-SF, median (IQR) (mean)                      | 12 (11–13) (12.00)    | 12 (11–13) (12.01)               | 12 (11–13) (11.98)                  | 0.055   |
| Surgical procedure                               |                       |                                  |                                     |         |
| Anterior resection                               | 1621 (19.4)           | 1147 (20.8)                      | 474 (16.6)                          | <0.0001 |
| Right colectomy                                  | 3196 (38.2)           | 2102 (38.2)                      | 1094 (38.3)                         |         |
| Left colectomy                                   | 2319 (27.7)           | 1497 (30.4)                      | 822 (28.8)                          |         |
| Splenic flexure resection                        | 251 (3.0)             | 159 (2.9)                        | 92 (3.2)                            |         |
| Hartmann's reversal                              | 232 (2.8)             | 147 (2.7)                        | 85 (3.0)                            |         |
| Transverse colectomy                             | 172 (2.1)             | 116 (2.1)                        | 56 (2.0)                            |         |
| (Sub)total colectomy                             | 161 (1.9)             | 89 (1.6)                         | 72 (2.5)                            |         |
| Other resection                                  | 407 (4.9)             | 245 (4.4)                        | 162 (5.6)                           |         |
| Surgery for malignancy                           | 6043 (72.3)           | 3823 (69.5)                      | 2220 (77.7)                         | <0.0001 |
| Operation length, median (IQR), minutes          | 180 (130–225)         | 180 (135–230)                    | 170 (125–215)                       | <0.0001 |
| High volume (>4 enrolled cases/month)            | 6414 (76.7)           | 4414 (80.2)                      | 2000 (70.0)                         | <0.0001 |
| Surgical approach                                |                       |                                  |                                     |         |
| Converted  | 422 (5.0)             | 284 (5.2)                        | 138 (4.8)                           | <0.0001 |
| Laparoscopic                                     | 5965 (71.4)           | 4249 (77.2)                      | 1716 (60.1)                         |         |
| Open   | 1238 (14.8)           | 679 (12.3)                       | 559 (19.6)                          |         |
| Robotic  | 734 (8.8)             | 290 (5.3)                        | 444 (15.5)                          |         |
| ERAS items                                       |                       |                                  |                                     |         |
| Overall adherence (20 items), median (IQR), %    | 75 (55–85)            | 80 (65–90)                       | 65 (45–75)                          | <0.0001 |
| Overall adherence (16 items), median (IQR), %    | 75 (56.2–87.5)        | 81.2 (62.5–87.5)                 | 68.7 (50–75)                        | <0.0001 |
| Prehabilitation                                  | 3082 (36.9)           | 2655 (48.2)                      | 427 (14.9)                          | <0.0001 |
| Counseling                                       | 5406 (64.7)           | 3975 (72.2)                      | 1431 (50.1)                         | <0.0001 |
| Preoperative immunonutrition                     | 2370 (28.4)           | 1988 (36.1)                      | 382 (13.4)                          | <0.0001 |
| Antithrombotic prophylaxis                       | 7649 (91.5)           | 5160 (93.8)                      | 2489 (87.1)                         | <0.0001 |
| Antibiotic prophylaxis                           | 7866 (94.1)           | 5358 (97.4)                      | 2508 (87.8)                         | <0.0001 |
| No bowel preparation                             | 5356 (64.1)           | 3840 (69.8)                      | 1516 (53.1)                         | <0.0001 |
| Oral carbohydrates load & preoperative fasting   | 4523 (54.1)           | 3125 (56.8)                      | 1398 (48.9)                         | <0.0001 |
| No premedication                                 | 6190 (74.0)           | 1981 (36.1)                      | 913 (32.2)                          | <0.0001 |
| PONV prophylaxis                                 | 7065 (84.5)           | 4712 (85.6)                      | 2353 (82.3)                         | <0.0001 |
| Normothermia                                     | 7490 (89.6)           | 5040 (91.6)                      | 2450 (85.7)                         | <0.0001 |
| Standard anesthesia protocol                     | 6541 (78.2)           | 4705 (85.5)                      | 1836 (64.3)                         | <0.0001 |
| Intraoperative fluid management                  | 6188 (74.0)           | 4322 (78.5)                      | 1866 (65.3)                         | <0.0001 |
| Multimodal analgesia                             | 7259 (86.8)           | 5022 (91.3)                      | 2237 (78.3)                         | <0.0001 |
| Minimally invasive surgery                       | 7084 (84.7)           | 4812 (87.4)                      | 2272 (79.5)                         | <0.0001 |
| No nasogastric tube                              | 6981 (83.5)           | 4757 (86.4)                      | 2224 (77.8)                         | <0.0001 |
| No drain   | 2667 (31.9)           | 2004 (36.4)                      | 663 (23.2)                          | <0.0001 |
| Early removal of bladder catheter                | 6121 (73.2)           | 4023 (73.1)                      | 2098 (73.4)                         | 0.758   |
| Early mobilization                               | 4580 (54.8)           | 3424 (62.2)                      | 1156 (40.5)                         | <0.0001 |
| Early oral feeding                               | 4404 (52.7)           | 3518 (63.9)                      | 886 (31.0)                          | <0.0001 |
| Predischarge check                               | 6499 (77.7)           | 4437 (80.6)                      | 2062 (72.2)                         | <0.0001 |
| Outcomes   |                       |                                  |                                     |         |
| Overall morbidity                                | 2321 (27.8)           | 1579 (28.7)                      | 742 (26.0)                          | 0.009   |
| Major morbidity                                  | 523 (6.3)             | 347 (6.3)                        | 176 (6.2)                           | 0.793   |
| Anastomotic leakage                              | 366 (4.4)             | 248 (4.5)                        | 118 (4.1)                           | 0.424   |
| Mortality  | 88 (1.0)              | 53 (1.0)                         | 35 (1.2)                            | 0.266   |
| Surgical site infections                         | 388 (4.6)             | 233 (4.2)                        | 155 (5.4)                           | 0.014   |
| Infectious morbidity                             | 524 (6.3)             | 325 (5.9)                        | 199 (7.0)                           | 0.058   |
| Readmission                                      | 288 (3.4)             | 197 (3.6)                        | 91 (3.2)                            | 0.347   |
| Reoperation                                      | 429 (5.1)             | 301 (5.5)                        | 128 (4.5)                           | 0.058   |
| LOS, median (IQR) [mean], days                   | 6 (4–8) (7.3)         | 6 (4–8) (7.2)                    | 6 (4–8) (7.5)                       | 0.003   |

ASA, American Society of Anesthesiologists; LOS, overall postoperative length of stay. MNA-SF, mini nutritional assessment short form; PONV, postoperative nausea/vomiting.

Downloaded from https://journals.lww.com/jisa by BDDM5ePHKav1zEoum1IQINda+KJLHeZgbsH04XMI0h0CwCX1AAW on 12/02/2024



**Figure 3.** Curves of univariate analyses for the endpoints according to the quartiles of ERAS adherence rate (based on 20 items); to overlap the graphs on the same scale, overall morbidity rates were reduced by a magnitude of tenfold.

**Table 5**  
Univariate analyses according to ERAS adherence quartiles

| ERAS 20 items        | Overall                          |       | 1st quartile adherence <60% (< 12 items) |      | 2nd quartile adherence 60–70% (12–14 items) |      | 3rd quartile adherence 75–85% (15–17 items) |      | 4th quartile adherence >85% (18–20 items) |      | P       |
|----------------------|----------------------------------|-------|--|------|---|------|---|------|---|------|---------|
|                      | No.                              | %     | No.                                      | %    | No.   | %    | No.   | %    | No.                                       | %    |         |
| Overall              | 8,359                            | 100.0 | 2,193                                    | 26.2 | 1,787                                       | 21.4 | 2,489                                       | 29.8 | 1,890                                     | 22.6 | –       |
| Overall morbidity    | 2321                             | 27.8  | 638                                      | 29.1 | 524   | 29.3 | 668   | 26.8 | 491                                       | 26.0 | 0.043   |
| Major morbidity      | 523                              | 6.3   | 151                                      | 6.9  | 124   | 6.9  | 155   | 6.2  | 93  | 4.9  | 0.037   |
| Anastomotic leakage  | 366                              | 4.4   | 107                                      | 4.9  | 85  | 4.8  | 107   | 4.3  | 67  | 3.5  | 0.165   |
| Mortality            | 88                               | 1.0   | 44                                       | 2.0  | 19  | 1.1  | 16  | 0.6  | 9   | 0.5  | <0.0001 |
| SSIs                 | 388                              | 4.6   | 124                                      | 5.7  | 111   | 6.2  | 97  | 3.9  | 56  | 3.0  | <0.0001 |
| Infectious morbidity | 524                              | 6.3   | 170                                      | 7.8  | 137   | 7.7  | 129   | 5.2  | 88  | 4.7  | <0.0001 |
| Readmission          | 288                              | 3.4   | 67                                       | 3.1  | 63  | 3.5  | 92  | 3.7  | 66  | 3.5  | 0.677   |
| Reoperation          | 429                              | 5.1   | 113                                      | 5.2  | 92  | 5.1  | 136   | 5.5  | 88  | 4.7  | 0.695   |
| Overall LOS, days    | Mean; median; IQR<br>7.3; 6; 4–8 |       | Mean; median; IQR<br>8.8; 7; 6–9         |      | Mean; median; IQR<br>8.0; 6; 5–8            |      | Mean; median; IQR<br>6.9; 5; 4–7            |      | Mean; median; IQR<br>5.5; 4; 3–6          |      | <0.0001 |

| ERAS 16 items        | Overall                          |       | 1st quartile adherence ≤ 56.2% (≤ 9 items) |      | 2nd quartile adherence 62.5–75% (10–12 items) |      | 3rd quartile adherence 81.2–87.5% (13–14 items) |      | 4th quartile Adherence > 87.5% (15–16 items) |      | P       |
|----------------------|----------------------------------|-------|--|------|---|------|---|------|--|------|---------|
|                      | No.                              | %     | No.  | %    | No.   | %    | No.   | %    | No.  | %    |         |
| Overall              | 8,359                            | 100.0 | 2,162                                      | 25.9 | 2,671   | 31.9 | 2,160   | 25.8 | 1,366  | 16.4 | –       |
| Overall morbidity    | 2321                             | 27.8  | 603  | 27.9 | 772   | 28.9 | 575   | 26.6 | 371  | 27.1 | 0.333   |
| Major morbidity      | 523                              | 6.3   | 134  | 6.2  | 179   | 6.7  | 132   | 6.1  | 78   | 5.7  | 0.639   |
| Anastomotic leakage  | 366                              | 4.4   | 100  | 4.6  | 120   | 4.5  | 93  | 4.3  | 53   | 3.9  | 0.744   |
| Mortality            | 88                               | 1.0   | 36   | 1.7  | 26  | 1.0  | 21  | 1.0  | 5  | 0.4  | 0.003   |
| SSIs                 | 388                              | 4.6   | 115  | 5.3  | 155   | 5.8  | 76  | 3.5  | 42   | 3.1  | <0.0001 |
| Infectious morbidity | 524                              | 6.3   | 157  | 7.3  | 195   | 7.3  | 106   | 4.9  | 66   | 4.8  | 0.0002  |
| Readmission          | 288                              | 3.4   | 65   | 3.0  | 110   | 4.1  | 65  | 3.0  | 48   | 3.5  | 0.105   |
| Reoperation          | 429                              | 5.1   | 102  | 4.7  | 141   | 5.3  | 114   | 5.3  | 72   | 5.3  | 0.794   |
| Overall LOS, days    | Mean; median; IQR<br>7.3; 6; 4–8 |       | Mean; median; IQR<br>8.5; 7; 5–9           |      | Mean; median; IQR<br>7.9; 6; 5–8              |      | Mean; median; IQR<br>6.4; 5; 4–7                |      | Mean; median; IQR<br>5.8; 4; 3–6             |      | <0.0001 |

LOS, length of stay; SSIs, surgical site infections.

stay, but failure to show reduced complication rates<sup>32</sup> has caused this item to remain controversial. In a recent European study,<sup>15</sup> avoidance of an abdominal drain was the only independent item of the ERAS pathway associated with a significant reduction of moderate-to-severe complications, confirming the existing evidence<sup>33</sup> and current guidelines<sup>19,20</sup> against its routine use because of increased rates of infection, abdominal pain, decreased pulmonary function and prolonged hospital stay; current analysis showed that an abdominal drain is still used in three-quarters of cases and in more than half of cases in a recent EuroSurg

Collaborative international study in 22 countries.<sup>34</sup> It could be inferred that asking a surgeon not to leave a drain in place after a colorectal resection is a task harder than trying to remove a pacifier from a toddler’s mouth. This clear decoupling between evidence-based recommendations and every day clinical practice deserves further investigation. Early postoperative feeding and mobilization are generally considered human resource-consuming items<sup>35,36</sup> and may therefore not receive the proper priority within the ERAS pathway implementation.<sup>10</sup> At the same time, the omission of mechanical bowel preparation is still a matter of

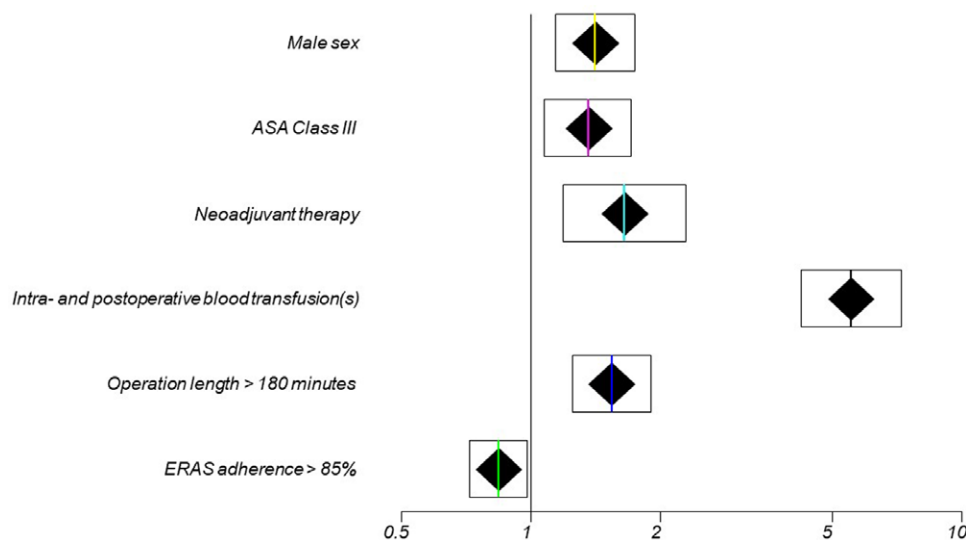
**Table 6**

**Logistic regression analysis for major morbidity, weighted for minimally invasive surgery**

| Variable                                    | Pattern      | No.   | %    | Events | %    | P       | VIF   | Beta   | Beta SE | OR   | 95%CI     | P       |
|---|--------------|-------|------|--------|------|---------|-------|--------|---------|------|-----------|---------|
| Age (years)                                 | ≤69          | 4,233 | 50.6 | 234    | 5.5  | 0.005   | 1.245 | -0.078 | 0.670   | 0.92 | 0.74–1.16 | 0.503   |
|   | >69          | 4,126 | 49.4 | 289    | 7.0  |         |       |        |         |      |           |         |
| Sex   | Female       | 4,061 | 48.6 | 213    | 5.2  |         |       |        |         |      |           |         |
|   | Male         | 4,298 | 51.4 | 310    | 7.2  | <0.001  | 1.032 | 0.342  | 3.190   | 1.41 | 1.14–1.74 | 0.002   |
| ASA class                                   | I–II         | 5,421 | 64.9 | 288    | 5.3  |         |       |        |         |      |           |         |
|   | III          | 2,938 | 35.1 | 235    | 8.0  | <0.0001 | 1.266 | 0.305  | 2.551   | 1.36 | 1.07–1.71 | 0.011   |
| MNA-SF                                      | ≤11          | 2,430 | 29.1 | 180    | 7.4  |         |       |        |         |      |           |         |
|   | >11          | 5,929 | 70.9 | 343    | 5.8  | 0.006   | 1.068 | -0.048 | -0.418  | 0.95 | 0.76–1.19 | 0.676   |
| Neoadjuvant therapy                         | No           | 7,741 | 92.6 | 463    | 6.0  |         |       |        |         |      |           |         |
|   | Yes          | 618   | 7.4  | 60     | 9.7  | <0.001  | 1.016 | 0.501  | 3.032   | 1.65 | 1.19–2.28 | 0.002   |
| Surgical approach                           | Converted    | 422   | 5.0  | 40     | 9.5  |         |       |        |         |      |           |         |
|   | Laparoscopic | 5,965 | 71.4 | 320    | 5.4  | <0.0001 | 1.288 | 0.010  | 0.129   | 1.01 | 0.87–1.17 | 0.897   |
|   | Open         | 1,238 | 14.8 | 112    | 9.0  |         |       |        |         |      |           |         |
|   | Robotic      | 734   | 8.8  | 51     | 6.9  |         |       |        |         |      |           |         |
| Intra- and postoperative blood transfusions | No           | 7,800 | 93.3 | 392    | 5.0  |         |       |        |         |      |           |         |
|   | Yes          | 559   | 6.7  | 131    | 23.4 | <0.0001 | 1.035 | 1.713  | 1.607   | 5.54 | 4.25–7.24 | <0.0001 |
| Surgery for malignancy                      | No           | 2,316 | 27.7 | 120    | 5.2  |         |       |        |         |      |           |         |
|   | Yes          | 6,043 | 72.3 | 403    | 6.7  | 0.012   | 1.132 | 0.016  | 0.124   | 1.02 | 0.79–1.31 | 0.901   |
| Operation length (minutes)                  | ≤180         | 4,736 | 56.7 | 253    | 5.3  |         |       |        |         |      |           |         |
|   | >180         | 3,623 | 43.3 | 270    | 7.5  | <0.0001 | 1.069 | 0.434  | 4.074   | 1.54 | 1.25–1.90 | <0.0001 |
| Minimally invasive surgery                  | No           | 1,238 | 14.8 | 112    | 9.0  | <0.0001 | 1.381 |        |         |      |           |         |
|   | Yes          | 7,121 | 85.2 | 411    | 5.8  |         |       |        |         |      |           |         |
| ERAS 20 items adherence rate (%)            | ≤85          | 6,469 | 77.4 | 430    | 6.6  |         |       |        |         |      |           |         |
|   | >85          | 1,890 | 22.6 | 93     | 4.9  | 0.007   | 1.144 | -0.171 | -2.195  | 0.84 | 0.72–0.98 | 0.028   |

Deviance (likelihood ratio) chi-square = 195.335; df = 10; P < 0.0001.

95% CI indicates 95% confidence intervals; ASA, American Society of Anesthesiologists; ERAS, enhanced recovery after surgery; MNA-SF, mini nutritional assessment short form; OR, odds ratios; SE, standard error; VIF, variance inflation factor.



**Figure 4.** Forest plot (log scale) of independent variables for major morbidity; diamonds show ORs, boxes show 95% CIs.

ongoing controversy with North American ERAS guidelines,<sup>37</sup> that support it coupled with oral antibiotic prophylaxis.

On the other hand, it remains hard to explain why preoperative counseling remains underutilized since it is self-evident that the greater involvement of patients in their healthcare is an essential factor affecting adherence to any medical treatment.<sup>38</sup>

After multivariate analyses, male sex, ASA class III, neoadjuvant therapy, intra- and/or postoperative blood transfusions, and length of the operation >180' resulted as independent risk factors for higher MM and AL rates (Tables 6, 7, and Figures 4, 5); ASA class III and perioperative steroids were independent determinants of higher M rates (Table 8 and Figure 6). This finding was somehow expected, as these patient-related or

treatment-related variables are well-established risk factors for adverse outcomes after CRS.<sup>39–43</sup> In this context, while it appears difficult, if not possible at all, to change the sex, age, ASA class, or neoadjuvant management of the patient, there is plenty of room to reduce the number of perioperative blood transfusions<sup>44–46</sup>; in recent years, various strategies have been studied to reduce the use of blood transfusions to prevent transfusion-related adverse events,<sup>47</sup> increase patient safety, and reduce costs. Consequently, a new concept was born: patient blood management (PBM). According to the World Health Organization, PBM is defined as “the timely application of evidence-based medical and surgical concepts designed to maintain a patient’s hemoglobin concentration, optimize hemostasis and minimize blood loss in an

Downloaded from https://journals.lww.com/jisa by BMDM5ePHKav1zEoum1tQINda+KJLhEZgbsHh4XMM0h0CwCX1AAW nYQp/1QIHID33D00dRy7TVSFAcI3VCA/OAVpDDa8K2hYabH515KE= on 12/02/2024

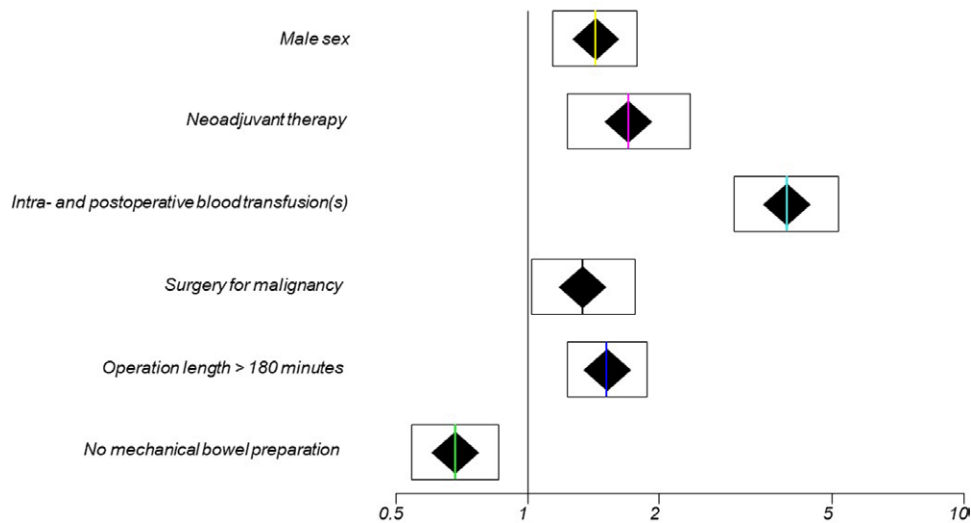


**Table 7**  
**Logistic regression analysis for anastomotic leakage, weighted for early oral feeding**

| Variable                                    | Pattern | No.   | %    | Events | %    | P       | VIF   | Beta   | Beta SE | OR   | 95% CI    | P       |
|---|---------|-------|------|--------|------|---------|-------|--------|---------|------|-----------|---------|
| Sex   | Female  | 4,061 | 48.6 | 140    | 3.4  |         |       |        |         |      |           |         |
|   | Male    | 4,298 | 51.4 | 226    | 5.3  | <0.0001 | 1.022 | 0.355  | 3.170   | 1.43 | 1.14–1.78 | 0.001   |
| ASA class                                   | I–II    | 5,421 | 64.9 | 207    | 3.8  |         |       |        |         |      |           |         |
|   | III     | 2,938 | 35.1 | 159    | 5.4  | <0.001  | 1.129 | 0.159  | 1.362   | 1.17 | 0.93–1.47 | 0.173   |
|   | IV      | 7,164 | 85.7 | 299    | 4.2  |         |       |        |         |      |           |         |
| Diabetes                                    | No      | 1,195 | 14.3 | 67     | 5.6  | 0.025   | 1.083 | 0.133  | 0.909   | 1.14 | 0.86–1.52 | 0.363   |
|   | Yes     | 7,741 | 92.6 | 319    | 4.1  |         |       |        |         |      |           |         |
| Neoadjuvant therapy                         | No      | 618   | 7.4  | 47     | 7.6  | <0.0001 | 1.015 | 0.530  | 3.183   | 1.70 | 1.23–2.35 | 0.002   |
|   | Yes     | 7,800 | 93.3 | 289    | 3.7  |         |       |        |         |      |           |         |
| Intra- and postoperative blood transfusions | No      | 559   | 6.7  | 77     | 13.8 | <0.0001 | 1.025 | 1.366  | 9.667   | 3.92 | 2.97–5.17 | <0.0001 |
|   | Yes     | 2,316 | 27.7 | 71     | 3.1  |         |       |        |         |      |           |         |
| Surgery for malignancy                      | No      | 6,043 | 72.3 | 295    | 4.9  | <0.001  | 1.084 | 0.289  | 2.064   | 1.34 | 1.02–1.76 | 0.039   |
|   | Yes     | 4,736 | 56.7 | 168    | 3.5  |         |       |        |         |      |           |         |
| Operation length (minutes)                  | ≤180    | 3,623 | 43.3 | 298    | 8.2  | <0.0001 | 1.019 | 0.419  | 3.822   | 1.52 | 1.23–1.88 | <0.0001 |
|   | >180    | 3,003 | 35.9 | 161    | 5.4  |         |       |        |         |      |           |         |
| No bowel preparation                        | No      | 5,356 | 64.1 | 205    | 3.8  | 0.001   | 1.152 | -0.379 | -3.235  | 0.68 | 0.54–0.86 | 0.001   |
|   | Yes     | 3,955 | 47.3 | 197    | 5.0  |         |       |        |         |      |           |         |
| Early oral feeding                          | No      | 4,404 | 52.7 | 169    | 3.8  | 0.012   | 1.433 | Weight |         |      |           |         |
|   | Yes     | 6,469 | 77.4 | 299    | 4.6  | 0.044   | 1.295 | 0.079  | 0.474   | 1.08 | 0.78–1.50 | 0.635   |
| ERAS 20 items adherence rate (%)            | ≤85     | 1,890 | 22.6 | 67     | 3.5  |         |       |        |         |      |           |         |
|   | >85     |       |      |        |      |         |       |        |         |      |           |         |

Deviance (likelihood ratio) chi-square = 43.155; df = 9; P < 0.0001.

95% CI indicates 95% confidence intervals; ASA, American Society of Anesthesiologists; ERAS, enhanced recovery after surgery; OR, odds ratios; SE, standard error; VIF, variance inflation factor.



**Figure 5.** Forest plot (log scale) of independent variables for anastomotic leakage; diamonds show ORs, boxes show 95% CIs.

effort to improve the outcomes.”<sup>48</sup> The iCral study group is currently enrolling patients in its 4th observational study designed to test the effect of adherence to a combined ERAS-PBM pathway on blood transfusions rate and outcomes.<sup>49</sup>

Notwithstanding significantly higher overall ERAS adherence rates, patients treated in a self-declared ERAS center experienced higher overall morbidity rates and shorter LOS at univariate analysis (Table 4). This controversial finding is probably due to significant residual confounders in the individual patient group assignment and in the distribution of the other variables. However, the self-declared ERAS center status did not appear to influence any primary endpoint at multivariate analyses, similar to what was recently observed in a large European prospective cohort,<sup>15</sup> confirming that “having or declaring ERAS” is not enough to impact on early outcomes.<sup>50</sup>

On the other hand, there was a solid and independent impact of the highest quartile (>85%) of ERAS 20-items adherence on MM (OR, 0.84; 95% CI, 0.72–0.98; P = 0.028) and M (OR,

0.25; 95% CI, 0.07–0.82; P = 0.022) rates. Although significant at univariate analysis, it was not an independent predictor of AL rates (OR, 0.92; 95% CI, 0.66–1.28; P = 0.635). The question triggered by this finding is “Should we struggle to reach high adherence in most cases to achieve better outcomes?” Considering that the protective role of high adherence to the pathway recorded in the present analysis was clearly independent from other confounding variables related to the patient, the disease, or the operation performed, the most intuitive answer is yes. Moreover, several studies<sup>5–8</sup> have already demonstrated that the ERAS dose-effect on outcomes acts as a whole, with pre- and intraoperative items designed to allow patients’ early mobilization, early oral feeding, early removal of urinary catheter, and early discharge. In this regard, several authors consider these postoperative items as outcomes rather than variables of the program<sup>7</sup>: to be able to eat, drink or mobilize at all can only be achieved with proper care delivered during the pre- and intraoperative phase to allow for it. For

**Table 8**

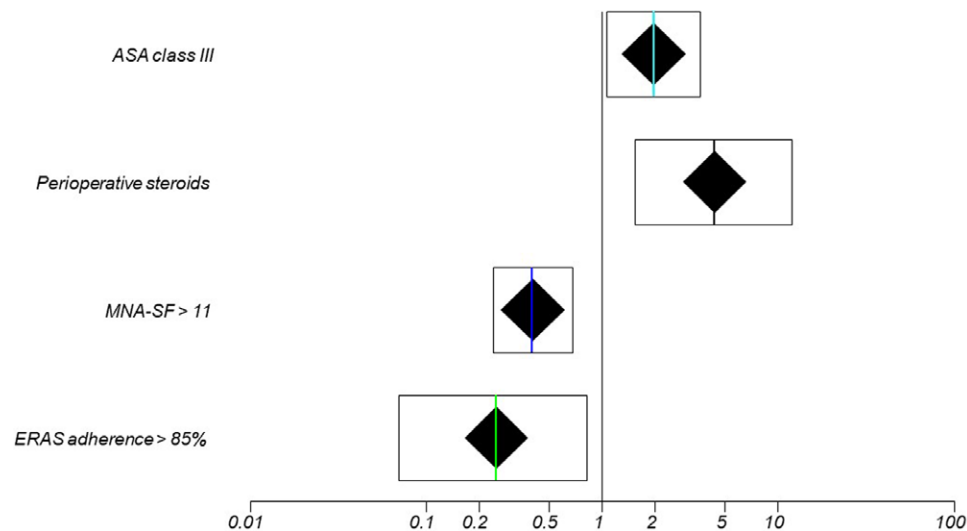
**Logistic regression analysis for mortality, weighted for age**

| Variable                                    | Pattern      | No.  | %    | Events | %   | P       | VIF    | Beta     | Beta SE | OR   | 95%CI      | P      |
|---|--------------|------|------|--------|-----|---------|--------|----------|---------|------|------------|--------|
| Age (years)                                 | ≤69          | 4233 | 50.6 | 15     | 0.4 |         |        |          |         |      |            |        |
|   | >69          | 4126 | 49.4 | 73     | 1.8 | <0.0001 | 3.835  | Weight   |         |      |            |        |
| Sex   | Female       | 4061 | 48.6 | 32     | 0.8 |         |        |          |         |      |            |        |
|   | Male         | 4298 | 51.4 | 56     | 1.3 | 0.021   | 1.039  | 0.487    | 1.834   | 1.63 | 0.97–2.74  | 0.066  |
| ASA class                                   | I–II         | 5421 | 64.9 | 26     | 0.5 |         |        |          |         |      |            |        |
|   | III          | 2938 | 35.1 | 62     | 2.1 | <0.0001 | 1.259  | 0.674    | 2.162   | 1.96 | 1.06–3.62  | 0.031  |
| MNA-SF                                      | ≤11          | 2430 | 29.1 | 50     | 2.1 |         |        |          |         |      |            |        |
|   | >11          | 5929 | 70.9 | 38     | 0.6 | <0.0001 | 1.069  | −0.904   | −3.416  | 0.40 | 0.24–0.68  | 0.0006 |
| Chronic renal failure                       | No           | 7993 | 95.6 | 79     | 1.0 |         |        |          |         |      |            |        |
|   | Yes          | 366  | 4.4  | 9      | 2.5 | 0.014   | 1.015  | 0.574    | 1.508   | 1.78 | 0.84–3.75  | 0.131  |
| Perioperative steroids                      | No           | 8212 | 98.2 | 83     | 1.0 |         |        |          |         |      |            |        |
|   | Yes          | 147  | 1.8  | 5      | 3.4 | 0.019   | 1.009  | 1.465    | 2.802   | 4.33 | 1.55–12.06 | 0.005  |
| Surgical approach                           | Converted    | 422  | 5.0  | 10     | 2.4 |         |        |          |         |      |            |        |
|   | Laparoscopic | 5965 | 71.4 | 34     | 0.6 | <0.0001 | 4.077  | Excluded |         |      |            |        |
|   | Open         | 1238 | 14.8 | 31     | 2.5 |         |        |          |         |      |            |        |
|   | Robotic      | 734  | 8.8  | 13     | 1.8 |         |        |          |         |      |            |        |
| Preoperative blood transfusions             | No           | 7895 | 94.4 | 75     | 0.9 |         |        |          |         |      |            |        |
|   | Yes          | 464  | 5.6  | 13     | 2.8 | 0.001   | 1.068  | 0.176    | 0.496   | 1.19 | 0.59–2.39  | 0.619  |
| Intra- and postoperative blood transfusions | No           | 7800 | 93.3 | 70     | 0.9 |         |        |          |         |      |            |        |
|   | Yes          | 559  | 6.7  | 18     | 3.2 | <0.0001 | 1.051  | 0.548    | 1.756   | 1.73 | 0.94–3.19  | 0.079  |
| Surgery for malignancy                      | No           | 2316 | 27.7 | 13     | 0.6 | 0.009   | 1.203  | −0.167   | −0.459  | 0.84 | 0.41–1.73  | 0.646  |
|   | Yes          | 6043 | 72.3 | 75     | 1.2 |         |        |          |         |      |            |        |
| Standard procedure                          | No           | 1223 | 14.6 | 20     | 1.6 |         |        |          |         |      |            |        |
|   | Yes          | 7136 | 85.4 | 68     | 1.0 | 0.04    | 1.079  | −0.213   | −0.642  | 0.80 | 0.42–1.55  | 0.521  |
| Prehabilitation                             | No           | 5277 | 63.1 | 68     | 1.3 |         |        |          |         |      |            |        |
|   | Yes          | 3082 | 36.9 | 20     | 0.6 | 0.008   | 1.942  | −0.359   | −1.040  | 0.70 | 0.35–1.37  | 0.298  |
| Antibiotic prophylaxis                      | No           | 493  | 5.9  | 11     | 2.2 |         |        |          |         |      |            |        |
|   | Yes          | 7366 | 88.1 | 77     | 1.0 | 0.015   | 1.202  | −0.498   | −1.216  | 0.61 | 0.27–1.35  | 0.224  |
| Standard anesthesia protocol                | No           | 1818 | 21.7 | 29     | 1.6 |         |        |          |         |      |            |        |
|   | Yes          | 6541 | 78.3 | 59     | 0.9 | 0.015   | 1.871  | −0.259   | −0.776  | 0.77 | 0.40–1.48  | 0.437  |
| Restrictive or goal-directed fluid therapy  | No           | 2171 | 26.0 | 35     | 1.6 |         |        |          |         |      |            |        |
|   | Yes          | 6188 | 74.0 | 53     | 0.9 | 0.004   | 1.851  | −0.259   | −0.807  | 0.77 | 0.41–1.45  | 0.419  |
| Multimodal analgesia                        | No           | 1100 | 13.2 | 21     | 1.9 |         |        |          |         |      |            |        |
|   | Yes          | 7259 | 86.8 | 67     | 0.9 | 0.004   | 1.452  | −0.387   | −1.108  | 0.68 | 0.34–1.35  | 0.267  |
| Minimally invasive surgery                  | No           | 1238 | 14.8 | 31     | 2.5 |         |        |          |         |      |            |        |
|   | Yes          | 7121 | 85.2 | 57     | 0.8 | <0.0001 | 1.495  | −0.340   | −1.196  | 0.71 | 0.41–1.24  | 0.232  |
| No nasogastric tube                         | No           | 1378 | 16.5 | 24     | 1.7 | 0.009   | 1.498  | 0.534    | 1.553   | 1.70 | 0.87–3.34  | 0.120  |
|   | Yes          | 6981 | 83.5 | 64     | 0.9 |         |        |          |         |      |            |        |
| No drain                                    | No           | 5692 | 68.1 | 72     | 1.3 |         |        |          |         |      |            |        |
|   | Yes          | 2667 | 31.9 | 16     | 0.6 | 0.008   | 1.402  | −0.722   | −1.880  | 0.48 | 0.23–1.03  | 0.06   |
| Bladder catheter removed POD 1–2            | No           | 2238 | 26.8 | 45     | 2.0 |         |        |          |         |      |            |        |
|   | Yes          | 6121 | 73.2 | 43     | 0.7 | <0.0001 | 1.599  | −0.341   | −1.097  | 0.71 | 0.39–1.31  | 0.272  |
| Early mobilization                          | No           | 3779 | 45.2 | 61     | 1.6 |         |        |          |         |      |            |        |
|   | Yes          | 4580 | 54.8 | 27     | 0.6 | <0.0001 | 2.430  | −0.591   | −1.500  | 0.55 | 0.25–1.20  | 0.133  |
| Early oral feeding                          | No           | 3955 | 47.3 | 66     | 1.7 |         |        |          |         |      |            |        |
|   | Yes          | 4404 | 52.7 | 22     | 0.5 | <0.0001 | 2.529  | −0.194   | −0.470  | 0.82 | 0.37–1.85  | 0.638  |
| ERAS 20 items adherence rate (%)            | <60          | 2193 | 26.2 | 44     | 2.0 |         |        |          |         |      |            |        |
|   | 60–70        | 1787 | 21.4 | 19     | 1.1 | <0.0001 | 10.581 | Excluded |         |      |            |        |
|   | 75–85        | 2489 | 29.8 | 16     | 0.6 |         |        |          |         |      |            |        |
|   | >85          | 1890 | 22.6 | 9      | 0.5 |         |        |          |         |      |            |        |
| ERAS 16 items adherence rate (%)            | ≤56.2        | 2162 | 25.9 | 36     | 1.7 | 0.003   | 10.933 | Excluded |         |      |            |        |
|   | 62.5–75      | 2671 | 31.9 | 26     | 1.0 |         |        |          |         |      |            |        |
|   | 81.2–87.5    | 2160 | 25.8 | 21     | 1.0 |         |        |          |         |      |            |        |
|   | >87.5        | 1366 | 16.4 | 5      | 0.4 |         |        |          |         |      |            |        |
| ERAS 20 items adherence rate (%)            | ≤75          | 4771 | 57.1 | 67     | 1.4 | 0.0004  | 5.259  | Excluded |         |      |            |        |
|   | >75          | 3588 | 42.9 | 21     | 0.6 |         |        |          |         |      |            |        |
| ERAS 16 items adherence rate (%)            | ≤75          | 4833 | 57.8 | 62     | 1.3 |         |        |          |         |      |            |        |
|   | >75          | 3523 | 42.2 | 26     | 0.7 | 0.015   | 5.748  | Excluded |         |      |            |        |
| ERAS 20 items adherence rate (%)            | ≤85          | 6469 | 77.4 | 79     | 1.2 | 0.008   | 2.781  | 1.375    | 2.286   | 3.95 | 1.22–12.86 | 0.022  |
|   | >85          | 1890 | 22.6 | 9      | 0.5 |         |        |          |         |      |            |        |
| ERAS 16 items adherence rate (%)            | ≤87.5        | 6993 | 83.6 | 83     | 1.2 |         |        |          |         |      |            |        |
|   | >87.5        | 1366 | 16.4 | 5      | 0.4 | 0.003   | 2.875  | −0.786   | −1.181  | 0.46 | 0.12–1.68  | 0.237  |

Deviance (likelihood ratio) chi-square = 77.093; df = 22; P < 0.0001.

95% CI indicates 95% confidence intervals; ASA, American Society of Anesthesiologists; ERAS, enhanced recovery after surgery; MNA-SF, mini nutritional assessment short form; OR, odds ratios; POD, postoperative day; SE, standard error; VIF, variance inflation factor.

Downloaded from http://journals.lww.com/jisa by BMDM5ePHKav1zEoum11QINda+kLHeZgbsH04XMI0h0CwCX1AAW nYQp/1QIHID33D00dRfY7TVSFAC13VCA/OAVpDDa8K2+YabH515KE= on 12/02/2024



**Figure 6.** Forest plot (log scale) of independent variables for mortality; diamonds show ORs, boxes show 95% CIs.

this reason, we calculated overall ERAS adherence on both 20- and 16-items base (i.e. excluding postoperative items), recording the same median adherence value (75%) and a significant reduction of the number of patients included in the 4th quartile of adherence (from 1890 or 22.6% to 1366 or 16.4%). At the same, the significant correlation between ERAS 20-items adherence quartiles and overall and major morbidity rates recorded at univariate analysis (Figure 3) disappeared when considering ERAS 16-items adherence quartiles (Table 5). This finding seems to confirm that noncompliance with postoperative ERAS items may be significantly linked to the occurrence of postoperative adverse events making the patient unable to resume early mobilization, early oral feeding, and early discharge, thus making the 4th quartile of ERAS adherence a simple reservoir of the best performers. Conversely, other studies underlined that primary noncompliance with postoperative items induced by a lack of human and/or organizational resources or by lack of implementation is a key cause of program failure.<sup>5,6,8,11</sup> Unfortunately, both iCral studies were not designed to solve this issue, and, as a randomized controlled trial appears unpractical, the problem should be probably analyzed with a propensity score-matched analysis considering multiple treatments, using adherence to pre-, intra-, and postoperative ERAS items as treatment variables.<sup>51</sup>

Avoiding mechanical bowel preparation (MBP) resulted in an independent protective factor for AL (OR, 0.68; 95% CI, 0.54–0.86;  $P = 0.001$ ), confirming the recommendation of European and national guidelines.<sup>19,20</sup> Unfortunately, we could not ascertain to what extent oral antibiotics (OAB), alone or in combination with MBP, were used in our cohorts, as it was not requested per protocol. The recent resurgence of interest in OAB,<sup>52</sup> combined or not with MBP, is fueling the controversy with North American guidelines,<sup>37</sup> upon which OAB is routinely used by 83.2% and MBP by 98.6% of respondents to a recent survey among members of the American Society of Colon and Rectal Surgeons.<sup>53</sup> Results from ongoing, well-designed, and appropriately powered multicenter studies that randomize participants to three groups to receive no preparation, OAB alone, or a combination of MBP and OAB, are eagerly awaited.

This analysis carries on the strengths and limitations of the merged studies. Strengths are the large number of enrolled patients in a well-defined time-lapse in a large number of centers, representing a broad sample of surgical units performing colorectal resections in Italy, coupled with the prospective design of the study allowing to measure outcomes through the adherence to any single ERAS item in all the enrolled cases, responding to clear and sheer compliance criteria (Table 2).

The main limitation relies on merging the two studies: while it had no influence on the self-declared institutional ERAS center status, it undoubtedly determined a change in the adherence rate denominator or the total number of items considered in the pathway. Adherence was based on 21 items in the iCral 2 study, with a 71.4% overall median adherence rate,<sup>16</sup> and on 26 items in iCral3, with a slightly lower (69.2%) overall median adherence rate<sup>17</sup>; the 4th quartile threshold remained similar in both studies (80.8% and 80.9%, respectively). Using a denominator based on 20 items shared by the two studies raised the median overall adherence rate to 75% and 4th quartile threshold to >85%, which may well be considered a “Will Rogers effect.”<sup>54</sup> It should be noticed, however, that the items not recorded in this merged analysis were gut motility stimulation, separate consideration of nutritional, physical, and psychological prehabilitation, separate consideration of carbohydrates load and 2–6 hours fasting, preoperative anemia screening and correction, and no postoperative major opiates, and that the rate of patients included in the 4th quartile group remains very similar across the two studies and in the present analysis. Other limitations are intrinsic to any observational study, with the potential for residual, measured, and unmeasured confounding. Moreover, although quality control of data was performed and repeated at various levels, we could not exclude any measurement error from the investigators.

This merged analysis of two prospective multicenter studies confirmed the need for improving overall compliance to ERAS after CRS in Italy since high adherence resulted in an independent protective factor for major morbidity and mortality rates. At the same time, it confirmed the independent negative influence of perioperative blood transfusions on anastomotic leakage and major morbidity rates, calling urgent attention to implementing patient blood management programs.

## Acknowledgments

iCral2 and 3 study group investigators with shared authorship are:

Roberto Campagnacci, General Surgery Unit, “C. Urbani” Hospital, Jesi (AN); Raffaele De Luca, Department of Surgical Oncology, IRCCS Istituto Tumori “Giovanni Paolo II,” Bari; Ferdinando Ficari, General Surgery and IBD Unit, Careggi University Hospital, Firenze; Giuseppe Sica, Minimally Invasive Surgery Unit, Policlinico Tor Vergata University Hospital, Roma; Stefano Scabini, General & Oncologic Surgery Unit,

IRCCS “San Martino” National Cancer Center, Genova; Andrea Liverani, General Surgery Unit, Regina Apostolorum Hospital, Albano Laziale (RM); Marco Caricato, Colorectal Surgery Unit, Policlinico Campus BioMedico, Roma; Alberto Patriti, Department of Surgery, Marche Nord Hospital, Pesaro e Fano (PU); Stefano Mancini, General & Oncologic Surgery Unit, San Filippo Neri Hospital, ASL Roma 1; Gian Luca Baiocchi, General Surgery Unit 3, Department of Clinical and Experimental Sciences, University of Brescia; Roberto Santoro, General Oncologic Surgery Unit, Belcolle Hospital, Viterbo; Walter Siquini, General Surgery Unit, S. Lucia Hospital, Macerata; Gianluca Guercioni, General Surgery Unit, “C. e G. Mazzoni” Hospital, Ascoli Piceno; Massimo Basti, General Surgery Unit, Spirito Santo Hospital, Pescara; Corrado Pedrazzani, General & HPB Surgery Unit, University Hospital, Verona; Mauro Totis, Colorectal Surgery Unit, San Gerardo Hospital, ASST Monza; Alessandro Carrara, 1st General Surgery Unit, S. Chiara Hospital, Trento; Andrea Lucchi, General Surgery Unit, “Ceccarini” Hospital, Riccione (RN); Maurizio Pavanello, General Surgery Unit, AULSS2 Marca Trevigiana, Conegliano Veneto (TV); Andrea Muratore, General Surgery Unit, “E. Agnelli” Hospital, Pinerolo (TO); Stefano D’Ugo, General Surgery Unit, “V. Fazzi” Hospital, Lecce; Alberto Di Leo, General and Minimally Invasive Surgery Unit, San Camillo Hospital, Trento; Stefano Guadagni, General Surgery Unit, University of L’Aquila; Giusto Pignata, 2nd General Surgery Unit 2, Spedali Civili di Brescia; Ugo Elmore, Gastroenterologic Surgery Unit, IRCCS S. Raffaele Hospital, Milano; Gabriele Anania, General & Laparoscopic Surgery Unit, University Hospital, Ferrara; Francesco Corcione, General Oncologic and Minimally Invasive Surgery Unit, “Federico II” University, Napoli; Massimo Carlini, General Surgery Unit, S. Eugenio Hospital, ASL Roma 2; Nereo Vettoretto, General Surgery Unit, Spedali Civili di Brescia, Montichiari (BS); Graziano Longo, General Surgery Unit, Policlinico Casilino, Roma; Mario Sorrentino, General Surgery Unit, Latisana-Palmanova Hospital, Friuli Centrale University (UD); Antonio Giuliani, General Surgery Unit, S. Carlo Hospital, Potenza; Giovanni Ferrari, General Oncologic and Minimally Invasive Surgery Unit, Great Metropolitan Niguarda Hospital, Milano; Lucio Taglietti, General Surgery Unit, ASST Valcamonica, Esine (BS); Augusto Verzelli, General Surgery Unit, Profili Hospital, Fabriano (AN); Marianonietta Di Cosmo, General & Upper GI Surgery Unit, University Hospital, Verona; Stefano Rausei, General Surgery Unit, Gallarate Hospital (VA); Davide Cavaliere, General & Oncologic Surgery Unit, AUSL Romagna, Forlì (FC); Marco Milone, General & Endoscopic Surgery Unit, “Federico II” University, Napoli; Giovanni Ciaccio, General Surgery Unit, S. Elia Hospital, Caltanissetta; Giovanni Tebala, General Surgery Unit, S. Maria Hospital, Terni; Giuseppe Brisinda, General Surgery Unit, San Giovanni di Dio Hospital, Crotone; Stefano Berti, General Surgery Unit, ASL 5 Liguria POLL, La Spezia; Paolo Millo, General Surgery Unit, “U. Parini” Regional Hospital, Aosta; Luigi Boni, General Surgery Unit, Fondazione IRCCS Ca’ Granda, Policlinico Maggiore Hospital, Milano; Mario Guerrieri, Surgical Clinic, Torrette Hospital, University of Ancona; Roberto Persiani, General Surgery Unit, Fondazione Policlinico Universitario Agostino Gemelli IRCCS, Roma; Dario Parini, General Surgery Unit, S. Maria della Misericordia Hospital, Rovigo; Antonino Spinelli, Department of Biomedical Sciences, Humanitas University, Pieve Emanuele (MI) and IRCCS Humanitas Research Hospital, Rozzano (MI); Michele Genna, General Surgery Unit, University Hospital, Verona; Vincenzo Bottino, General & Oncologic Surgery Unit, Evangelico Betania Hospital, Napoli; Andrea Coratti, General Surgery Unit, Misericordia Hospital, Grosseto; Dario Scala, Abdominal Oncologic Surgery Unit, IRCCS CROB Basilicata Referral Cancer Center, Rionero in Vulture (PZ); Umberto Rivolta, General Surgery Unit, Fornaroli Hospital, ASST Milano

Ovest, Magenta (MI); Micaela Piccoli, General Surgery Unit, Civil Hospital, Baggiovara (MO); Carlo Talarico, General Surgery Unit, Villa dei Gerani Hospital, Vibo Valentia (VV); Franco Roviello, Surgical Clinic, University of Siena; Alessandro Anastasi, General Surgery Unit, San Giovanni di Dio Hospital, Firenze; Giuseppe Maria Ettore, General & Transplant Surgery Unit, San Camillo-Forlanini Hospital, Roma; Mauro Montuori, General & Minimally Invasive Surgery Unit, S. Pietro Hospital, Ponte San Pietro (BG); Pierpaolo Mariani, General Surgery Unit, Pesenti Fenaroli Hospital, Alzano Lombardo (BG); Nicolò de Manzini, Surgical Clinic, University of Trieste; Annibale Donini, General & Emergency Surgery Unit, University of Perugia; Mariano Fortunato Armellino, General & Emergency Surgery Unit, S. Giovanni di Dio e Ruggi d’Aragona Hospital, Salerno; Carlo Vittorio Feo, General Surgery Unit, Delta Hospital, Lagosanto (FE); Silvio Guerriero, General Surgery Unit, “A. Murri” Hospital, Fermo; Andrea Costanzi, General Surgery Unit, S. Leopoldo Hospital, Merate (LC); Federico Marchesi, Surgical Clinic, University of Parma; Moreno Cicetti, General Surgery Unit, S. Maria della Misericordia Hospital, Urbino (PU); Paolo Ciano, Michele Benedetti, Leonardo Antonio Montemurro, Maria Sole Mattei, Elena Belloni, Daniela Apa, and Matteo Di Carlo, General Surgery Unit, Sandro Pertini Hospital, ASL Roma 2; Elisa Bertocchi, and Gaia Masini, General Surgery Unit, IRCCS Sacro Cuore Don Calabria Hospital, Negar di Valpolicella (VR); Amedeo Altamura and Francesco Rubichi, General Surgery Unit, Cardinale G. Panico Hospital, Tricase (LE); Antonio Sciuto, General Surgery Unit, ASL Napoli 2 Nord, Pozzuoli (NA); Ugo Pace and Andrea Fares Bucci, Colorectal Surgical Oncology, Istituto Nazionale per lo Studio e la Cura dei Tumori, “Fondazione Giovanni Pascale IRCCS-Italia,” Napoli; Desirée Cianflocca and Marco Migliore General & Oncologic Surgery Unit, Department of Surgery, Santa Croce e Carle Hospital, Cuneo; Francesco Monari, General Surgery Unit, Infermi Hospital, Rimini; Grazia Maria Attinà, General & Emergency Surgery Unit, San Camillo-Forlanini Hospital, Roma; Diletta Cassini, General Surgery Unit, ASST Ovest Milanese, Nuovo Ospedale di Legnano, Legnano (MI); Lorenzo Pandolfini and Alessandro Falsetto, General Surgery Unit, Santa Maria Annunziata Hospital, Firenze; Angela Maurizi, General Surgery Unit, “C. Urbani” Hospital, Jesi (AN); Michele Simone, Department of Surgical Oncology, IRCCS Istituto Tumori “Giovanni Paolo II,” Bari; Francesco Giudici, General Surgery and IBD Unit, Careggi University Hospital, Firenze; Fabio Cianchi, General Surgery and IBD Unit, Careggi University Hospital, Firenze; Bruno Sensi, Minimally Invasive Surgery Unit, Policlinico Tor Vergata University Hospital, Roma; Alessandra Aprile, General & Oncologic Surgery Unit, IRCCS “San Martino” National Cancer Center, Genova; Domenico Soriero, General & Oncologic Surgery Unit, IRCCS “San Martino” National Cancer Center, Genova; Andrea Scarinci, General Surgery Unit, Regina Apostolorum Hospital, Albano Laziale (RM); Gabriella Teresa Capolupo, Colorectal Surgery Unit, Policlinico Campus BioMedico, Roma; Valerio Sisti and Marcella Lodovica Ricci, Department of Surgery, Marche Nord Hospital, Pesaro e Fano (PU); Andrea Sagnotta, General & Oncologic Surgery Unit, San Filippo Neri Hospital, ASL Roma 1; Sarah Molfino, General Surgery Unit 3, Department of Clinical and Experimental Sciences, University of Brescia; Pietro Amodio, General Oncologic Surgery Unit, Belcolle Hospital, Viterbo; Alessandro Cardinali, and Massimo Sartelli, General Surgery Unit, S. Lucia Hospital, Macerata; Simone Cicconi and Irene Marziali, General Surgery Unit, “C. e G. Mazzoni” Hospital, Ascoli Piceno; Diletta Frazzini, General Surgery Unit, Spirito Santo Hospital, Pescara; Cristian Conti, General & HPB Surgery Unit, University Hospital, Verona; Nicolò Tamini and Marco Braga, Colorectal Surgery Unit, San Gerardo Hospital, ASST Monza; Michele Motter and Giuseppe Tirone, 1st General Surgery Unit, S.

Chiara Hospital, Trento; Giacomo Martorelli and Alban Cacurri, General Surgery Unit, “Ceccarini” Hospital, Riccione (RN); Carlo Di Marco, General Surgery Unit, AULSS2 Marca Trevigiana, Conegliano Veneto (TV); Patrizia Marsanic and Nicoletta Sveva Pipitone Federico, General Surgery Unit, “E. Agnelli” Hospital, Pinerolo (TO); Marcello Spampinato, General Surgery Unit, “V. Fazzi” Hospital, Lecce; Lorenzo Crepaz, General and Minimally Invasive Surgery Unit, San Camillo Hospital, Trento; Marco Clementi, General Surgery Unit, University of L’Aquila; Jacopo Andreuccetti and Ilaria Canfora, 2nd General Surgery Unit 2, Spedali Civili di Brescia; Giulia Maggi, Gastroenterologic Surgery Unit, IRCCS S. Raffaele Hospital, Milano; Matteo Chiozza, General & Laparoscopic Surgery Unit, University Hospital, Ferrara; Umberto Bracale, Roberto Peltrini, and Maria Michela Di Nuzzo, General Oncologic and Mininvasive Surgery Unit, “Federico II” University, Napoli; Domenico Spoletini, Rosa Marcellinano, and Giorgio Lisi, General Surgery Unit, S. Eugenio Hospital, ASL Roma 2; Emanuele Botteri, General Surgery Unit, Spedali Civili of Brescia, Montichiari (BS); Simone Santoni, General Surgery Unit, Policlinico Casilino, Roma; Massimo Stefanoni, General Surgery Unit, Latisana-Palmanova Hospital, Friuli Centrale University (UD); Giovanni Del Vecchio, General Surgery Unit, S. Carlo Hospital, Potenza; Carmelo Magistro, General Oncologic and Mininvasive Surgery Unit, Great Metropolitan Niguarda Hospital, Milano; Silvia Ruggiero and Arianna Birindelli, General Surgery Unit, ASST Valcamonica, Esine (BS); Andrea Budassi, General Surgery Unit, Profili Hospital, Fabriano (AN); Daniele Zigiotta, General & Upper GI Surgery Unit, University Hospital, Verona; Silvia Tenconi, General Surgery Unit, Gallarate Hospital (VA); Leonardo Solaini and Giorgio Ercolani, General & Oncologic Surgery Unit, AUSL Romagna, Forlì (FC); Giovanni Domenico De Palma, General & Endoscopic Surgery Unit, “Federico II” University, Napoli; Paolo Locurto, General Surgery Unit, S. Elia Hospital, Caltanissetta; Antonio Di Cintio, General Surgery Unit, S. Maria Hospital, Terni; Maria Michela Chiarello and Maria Cariati, General Surgery Unit, San Giovanni di Dio Hospital, Crotona; Andrea Gennai, General Surgery Unit, ASL 5 Liguria POLL, La Spezia; Manuela Grivon, General Surgery Unit, “U. Parini” Regional Hospital, Aosta; Elisa Cassinotti, General Surgery Unit, Fondazione IRCCS Ca’ Granda, Policlinico Maggiore Hospital, Milano; Monica Orteni, Surgical Clinic, Torrette Hospital, University of Ancona; Alberto Biondi, General Surgery Unit, Fondazione Policlinico Universitario Agostino Gemelli IRCCS, Roma; Maurizio De Luca, General Surgery Unit, S. Maria della Misericordia Hospital, Rovigo; Francesco Carrano, Department of Biomedical Sciences, Humanitas University, Pieve Emanuele (MI) and IRCCS Humanitas Research Hospital, Rozzano (MI); Francesca Fior, General Surgery Unit, University Hospital, Verona; Antonio Ferronetti, General & Oncologic Surgery Unit, Evangelico Betania Hospital, Napoli; Giuseppe Giuliani and Roberto Benigni General Surgery Unit, Misericordia Hospital, Grosseto; Graziella Marino, Abdominal Oncologic Surgery Unit, IRCCS CROB Basilicata Referral Cancer Center, Rionero in Vulture (PZ); Camillo Leonardo Bertoglio, General Surgery Unit, Fornaroli Hospital, ASST Milano Ovest, Magenta (MI); Francesca Pecchini, General Surgery Unit, Civil Hospital, Baggiovara (MO); Vincenzo Greco, General Surgery Unit, Villa dei Gerani Hospital, Vibo Valentia (VV); Roberto Piagnerelli, Surgical Clinic, University of Siena; Giuseppe Canonico, General Surgery Unit, San Giovanni di Dio Hospital, Firenze; Marco Colasanti, General & Transplant Surgery Unit, San Camillo-Forlanini Hospital, Roma; Enrico Pinotti, General & Mininvasive Surgery Unit, S. Pietro Hospital, Ponte San Pietro (BG); Roberta Carminati, General Surgery Unit, Pesenti Fenaroli Hospital, Alzano Lombardo (BG); Edoardo Osenda, Surgical Clinic, University of Trieste; Luigina Graziosi, General & Emergency Surgery Unit, University of Perugia; Ciro De Martino

and Giovanna Ioia, General & Emergency Surgery Unit, S. Giovanni di Dio e Ruggi d’Aragona Hospital, Salerno; Fioralba Pindozi, General Surgery Unit, Delta Hospital, Lagosanto (FE); Lorenzo Organetti, General Surgery Unit, “A. Murri” Hospital, Fermo; Michela Monteleone, General Surgery Unit, S. Leopoldo Hospital, Merate (LC); Giorgio Dalmonte, Surgical Clinic, University of Parma; Gabriele La Gioia, General Surgery Unit, S. Maria della Misericordia Hospital, Urbino (PU); Diana Giannarelli, Clinical Trial Center, Biostatistics and Bioinformatics, Fondazione Policlinico Universitario Agostino Gemelli IRCCS, Roma.

## References

1. Eskicioglu C, Forbes SS, Aarts MA, et al. Enhanced recovery after surgery (ERAS) programs for patients having colorectal surgery: a meta-analysis of randomized trials. *J Gastrointest Surg* 2009;13:2321–2329.
2. Spanjersberg WR, Reurings J, Keus F, van Laarhoven CJ. Fast track surgery versus conventional recovery strategies for colorectal surgery. *Cochrane Database Syst Rev* 2011;(2):CD007635.
3. Greco M, Capretti G, Beretta L, et al. Enhanced recovery program in colorectal surgery: a meta-analysis of randomized controlled trials. *World J Surg* 2014;38:1531–1541.
4. Gillissen F, Hoff C, Maessen JM, et al. Structured synchronous implementation of an enhanced recovery program in elective colonic surgery in 33 hospitals in The Netherlands. *World J Surg* 2013;37:1082–1093.
5. Messenger DE, Curtis NJ, Jones A, et al. Factors predicting outcome from enhanced recovery programmes in laparoscopic colorectal surgery: a systematic review. *Surg Endosc* 2017;31:2050–2071.
6. Smart NJ, White P, Allison AS, et al. Deviation and failure of enhanced recovery after surgery following laparoscopic colorectal surgery: early prediction model. *Colorectal Dis* 2012;14:e727–e734.
7. Gustafsson UO, Hausel J, Thorell A, et al; Enhanced Recovery After Surgery Study Group. Adherence to the enhanced recovery after surgery protocol and outcomes after colorectal cancer surgery. *Arch Surg* 2011;146:571–577.
8. ERAS Compliance Group. The impact of enhanced recovery protocol compliance on elective colorectal cancer resection: results from an international registry. *Ann Surg* 2015;261:1153–1159.
9. Braga M, Scatizzi M, Borghi F, et al; Perioperative Italian Society. Identification of core items in the enhanced recovery pathway. *Clin Nutr ESPEN* 2018;25:139–144.
10. Aarts MA, Rotstein OD, Pearsall EA, et al; iERAS group. Postoperative ERAS interventions have the greatest impact on optimal recovery: experience with implementation of ERAS across multiple hospitals. *Ann Surg* 2018;267:992–997.
11. Nelson G, Kiyang LN, Crumley ET, et al. Implementation of Enhanced Recovery After Surgery (ERAS) across a provincial healthcare system: the ERAS Alberta colorectal surgery experience. *World J Surg* 2016;40:1092–1103.
12. Ripollés-Melchor J, Ramírez-Rodríguez JM, Casans-Francés R, et al; POWER Study Investigators Group for the Spanish Perioperative Audit and Research Network (REDGERM). Association between use of enhanced recovery after surgery protocol and postoperative complications in colorectal surgery: the Postoperative Outcomes Within Enhanced Recovery After Surgery Protocol (POWER) study. *JAMA Surg* 2019;154:725–736.
13. Berian JR, Ban KA, Liu JB, et al. Adherence to enhanced recovery protocols in NSQIP and association with colectomy outcomes. *Ann Surg* 2019;269:486–493.
14. Catarci M, Benedetti M, Maurizi A, et al. ERAS pathway in colorectal surgery: structured implementation program and high adherence for improved outcomes. *Updates Surg* 2021;73:123–137.
15. Ripollés-Melchor J, Abad-Motos A, Cecconi M, et al; EuroPOWER Study Investigators Group. Association between use of enhanced recovery after surgery protocols and postoperative complications in colorectal surgery in Europe: the EuroPOWER international observational study. *J Clin Anesth* 2022;80:110752.
16. Catarci M, Ruffo G, Viola MG, et al; Italian ColoRectal Anastomotic Leakage (iCral) study group. ERAS program adherence-institutionalization, major morbidity and anastomotic leakage after elective colorectal surgery: the iCral2 multicenter prospective study. *Surg Endosc* 2022;36:3965–3984.
17. Italian ColoRectal Anastomotic Leakage (iCral) study group. Patient-reported outcomes, return to intended oncological therapy and enhanced

recovery pathways after colorectal surgery: a prospective multicenter observational investigation by the Italian ColoRectal Anastomotic Leakage (iCral 3) study group. *Ann Surg Open* 2023;4:e267.

18. Gustafsson UO, Scott MJ, Schwenk W, et al; Enhanced Recovery After Surgery (ERAS) Society, for Perioperative Care. Guidelines for perioperative care in elective colonic surgery: Enhanced Recovery After Surgery (ERAS®) Society recommendations. *World J Surg* 2013;37:259–284.
19. Gustafsson UO, Scott MJ, Hubner M, et al. Guidelines for perioperative care in elective colorectal surgery: Enhanced Recovery After Surgery (ERAS®) Society recommendations: 2018. *World J Surg* 2019;43:659–695.
20. Ficari F, Borghi F, Catarci M, et al. Enhanced recovery pathways in colorectal surgery: a consensus paper by the Associazione Chirurghi Ospedalieri Italiani (ACOI) and the PeriOperative Italian Society (POIS). *G Chir* 2019;40(4 Suppl.):1–40.
21. Dindo D, Demartines N, Clavien PA. Classification of surgical complications. A new proposal with evaluation in a cohort of 6336 patients and results of a survey. *Ann Surg* 2004;240:205–213.
22. Clavien PA, Barkun J, de Oliveira ML, et al. The Clavien-Dindo classification of surgical complications: five-year experience. *Ann Surg* 2009;250:187–196.
23. Katayama H, Kurokawa Y, Nakamura K, et al. Extended Clavien-Dindo classification of surgical complications: Japan Clinical Oncology Group postoperative complications criteria. *Surg Today* 2016;46:668–685.
24. Rahbari NN, Weitz J, Hohenberger W, et al. Definition and grading of anastomotic leakage following anterior resection of the rectum: a proposal by the International Study Group of Rectal Cancer. *Surgery* 2010;147:339–351.
25. Horan TC, Gaynes RP, Martone WJ, et al. CDC definitions of nosocomial surgical site infections 1992: a modification of CDC definitions of surgical wound infections. *Infect Control Hosp Epidemiol* 1992;13:606–608.
26. Kaiser MJ, Bauer JM, Ramsch C, et al; MNA-International Group. Validation of the Mini Nutritional Assessment short-form (MNA-SF): a practical tool for identification of nutritional status. *J Nutr Health Aging* 2009;13:782–788.
27. Kim JH. Multicollinearity and misleading statistical results. *Korean J Anesthesiol* 2019;72:558–569.
28. von Elm E, Altman DG, Egger M, et al; STROBE Initiative. The Strengthening the Reporting of Observational Studies in Epidemiology (STROBE) statement: guidelines for reporting observational studies. *J Clin Epidemiol* 2008;61:344–349.
29. Ljungqvist O, de Boer HD, Balfour A, et al. Opportunities and challenges for the next phase of enhanced recovery after surgery: a review. *JAMA Surg* 2021;156:775–784.
30. Adiamah A, Skořepa P, Weimann A, et al. The impact of preoperative immune modulating nutrition on outcomes in patients undergoing surgery for gastrointestinal cancer: a systematic review and meta-analysis. *Ann Surg* 2019;270:247–256.
31. Lobo DN, Gianotti L, Adiamah A, et al. Perioperative nutrition: recommendations from the ESPEN expert group. *Clin Nutr* 2020;39:3211–3227.
32. Amer MA, Smith MD, Herbison GP, et al. Network meta-analysis of the effect of preoperative carbohydrate loading on recovery after elective surgery. *Br J Surg* 2017;104:187–197.
33. Petrowsky H, Demartines N, Rousson V, et al. Evidence-based value of prophylactic drainage. *Ann Surg* 2004;240:1074–84; discussion 1084.
34. EuroSurg Collaborative. Intraperitoneal drain placement and outcomes after elective colorectal surgery: international matched, prospective, cohort study. *BJS* 2022;109:520–529.
35. Seow-En I, Wu J, Yang LWY, et al. Results of a colorectal Enhanced Recovery After Surgery (ERAS) programme and a qualitative analysis of healthcare workers' perspectives. *Asian J Surg* 2021;44:307–312.
36. Fiore JF Jr, Castelino T, Pecorelli N, et al. Ensuring early mobilization within an enhanced recovery program for colorectal surgery: a randomized controlled trial. *Ann Surg* 2017;266:223–231.
37. Carmichael JC, Keller DS, Baldini G, et al. Clinical practice guidelines for enhanced recovery after colon and rectal surgery from the American Society of Colon and Rectal Surgeons (ASCRS) and Society of American Gastrointestinal and Endoscopic Surgeons (SAGES). *Surg Endosc* 2017;31:3412–3436.
38. Kinney RL, Lemon SC, Person SD, et al. The association between patient activation and medication adherence, hospitalization, and emergency room utilization in patients with chronic illnesses: a systematic review. *Patient Educ Couns* 2015;98:545–552.
39. Law WJ, Chu KW, Ho JW, et al. Risk factors for anastomotic leakage after low anterior resection with total mesorectal excision. *Am J Surg* 2000;179:92–96.
40. Italian ColoRectal Anastomotic Leakage (iCral) study group. Risk factors for adverse events after elective colorectal surgery: beware of blood transfusions. *Updates Surg* 2020;72:811–819.
41. Bakker IS, Grossmann I, Henneman D, et al. Risk factors for anastomotic leakage and leak-related mortality after colonic cancer surgery in a nationwide audit. *Br J Surg* 2014;101:424–32; discussion 432.
42. Alves A, Panis Y, Mathieu P, et al; Association Française de Chirurgie. Postoperative mortality and morbidity in French patients undergoing colorectal surgery: results of a prospective multicenter study. *Arch Surg* 2005;140:278–83, discussion 284.
43. Ragg JL, Watters DA, Guest GD. Preoperative risk stratification for mortality and major morbidity in major colorectal surgery. *Dis Colon Rectum* 2009;52:1296–1303.
44. Hofmann A, Farmer S, Towler SC. Strategies to preempt and reduce the use of blood products: an Australian perspective. *Curr Opin Anaesthesiol* 2012;25:66–73.
45. Isbister JP. The three-pillar matrix of patient blood management. *ISBT Sci Ser* 2015;10(Suppl. 1):286–294.
46. Catarci M, Borghi F, Ficari F, et al. Perioperative anemia and its implications. *G Chir – JISA* 2022;42:e01.
47. Catarci M, Guadagni S, Masedu F, et al; Italian ColoRectal Anastomotic Leakage (iCral) Study Group. Blood Transfusions and Adverse Events after Colorectal Surgery: a propensity-score-matched analysis of a hengegg issue. *Diagnostics (Basel)* 2023;13:952.
48. World Health Organization. The urgent need to implement patient blood management: policy brief. 2021; ISBN 978-92-4-003574-4 (electronic version).
49. Italian ColoRectal Anastomotic Leakage (iCral) study group. Enhanced recovery and Patient Blood Management in colorectal surgery: the Italian ColoRectal Anastomotic Leakage study group (iCral 4). NCT05227014; 2022; ClinicalTrials.gov – NIH – US National Library of Medicine, Available at: <https://clinicaltrials.gov/ct2/show/NCT05227014>
50. Maessen J, Dejong CH, Hausel J, et al. A protocol is not enough to implement an enhanced recovery program for colorectal resection. *Br J Surg* 2007;94:224–231.
51. McCaffrey DF, Griffin BA, Almirall D, et al. A tutorial on propensity score estimation for multiple treatments using generalized boosted models. *Stat Med* 2013;32:3388–3414.
52. Rollins KE, Lobo DN. The controversies of mechanical bowel and oral antibiotic preparation in elective colorectal surgery. *Ann Surg* 2021;273:e13–e15.
53. McChesney SL, Zelhart MD, Green RL, et al. Current U.S. Preoperative bowel preparation trends: a 2018 survey of the American Society of Colon and Rectal Surgeons Members. *Surg Infect (Larchmt)* 2020;21:1–8.
54. Stander M, Stander J. A simple method for correcting for the Will Rogers phenomenon with biometrical applications. *Biom J* 2020;62:1080–1089.

Downloaded from <http://journals.lww.com/jisa> by BIDM/5epHKav1zEoum1tQINha+kLHEZg5siHo4XM0h0CwCX1AW nYQp/1QIHID33D00dRy7TVSfACI3VCA/OA/VPDDa8K2+YabH515KE= on 12/02/2024