

ORIGINAL
ARTICLEDysbindin-1 modifies signaling and cellular localization of recombinant, human D₃ and D₂ receptors

Nathalie Schmiege,* Cristina Rocchi,† Stefania Romeo,† Roberto Maggio,† Mark J. Millan* and Clotilde Mannoury la Cour*

*PIT-Neuropsychiatry, Institut de Recherches Servier, Centre de Recherches de Croissy, Croissy-sur-Seine, France

†Biotechnological and Applied Clinical Sciences Department, University of L'Aquila, L'Aquila, Italy

Abstract

Dystrobrevin binding protein-1 (dysbindin-1), a candidate gene for schizophrenia, modulates cognition, synaptic plasticity and frontocortical circuitry and interacts with glutamatergic and dopaminergic transmission. Loss of dysbindin-1 modifies cellular trafficking of dopamine (DA) D₂ receptors to increase cell surface expression, but its influence upon signaling has never been characterized. Further, the effects of dysbindin-1 upon closely related D₃ receptors remain unexplored. Hence, we examined the impact of dysbindin-1 (isoform A) co-expression on the localization and coupling of human D_{2L} and D₃ receptors stably expressed in Chinese hamster ovary or SH-SY5Y cells lacking endogenous dysbindin-1. Dysbindin-1 co-transfection decreased cell surface expression of both D₃ and D_{2L} receptors. Further, while their affinity for DA was unchanged, dysbindin-1 reduced the magnitude and potency of DA-induced adenylyl cyclase recruitment/cAMP production. Dysbindin-1 also blunted

the amplitude of DA-induced phosphorylation of ERK1/2 and Akt at both D_{2L} and D₃ receptors without, in contrast to cAMP, affecting the potency of DA. Interference with calveolin/clathrin-mediated processes of internalization prevented the modification by dysbindin-1 of ERK1/2 and adenylyl cyclase stimulation at D_{2L} and D₃ receptors. Finally, underpinning the specificity of the influence of dysbindin-1 on D_{2L} and D₃ receptors, dysbindin-1 did not modify recruitment of adenylyl cyclase by D₁ receptors. These observations demonstrate that dysbindin-1 influences cell surface expression of D₃ in addition to D_{2L} receptors, and that it modulates activation of their signaling pathways. Accordingly, both a deficiency and an excess of dysbindin-1 may be disruptive for dopaminergic transmission, supporting its link to schizophrenia and other CNS disorders.

Keywords: D₂ receptor, D₃ receptor, dopamine, dysbindin-1, internalization, schizophrenia.

J. Neurochem. (2016) **136**, 1037–1051.

Dysbindin-1, a widely expressed protein encoded by the dystrobrevin binding protein 1 (DTNBP1) gene located on chromosome 6p22.3 (Benson *et al.* 2001; Talbot 2009), can generate up to 16 different species of mRNA following transcription and processing. Among these potential variants, the three main isoforms are full-length dysbindin-1A and two truncated versions, dysbindin-1B and dysbindin-1C. Several allelic variants in the DTNBP1 gene appear to be more common in schizophrenia (Straub *et al.* 2002; Riley *et al.* 2009; Voisey *et al.* 2010; Ayalew *et al.* 2012) and recent findings suggest a specific link with corticolimbic and cerebellar connectivity (Nickl-Jockschat *et al.* 2012), fronto-hippocampal gray matter volume (Trost *et al.* 2013), cognitive dysfunction (Varela-Gomez *et al.* 2015) and hallucinations (Cheah *et al.* 2015). Interestingly, in several although not all studies (Fung *et al.* 2011) of schizophrenic patients, reduced

Received December 7, 2015; accepted December 9, 2015.

Address correspondence and reprint requests to Nathalie Schmiege, Institut de recherche Servier, Pole of Innovation in Neuropsychiatry, 125, chemin de Ronde, 78290 Croissy sur Seine, France. E-mail: nathalie.schmiege@crick.ac.uk

Abbreviations used: AC, adenylyl cyclase; ARF6, ADP-ribosylation factor 6; BLOC-1, biogenesis of lysosome-related organelles complex 1; CHO, Chinese hamster ovary; CREB, cAMP response element-binding protein; D_{2L} receptor, D_{2long} receptor; D_{2S} receptor, D_{2short} receptor; DA, dopamine; DTNBP1, dystrobrevin binding protein 1; ERK1/2, extracellular signal-regulated kinases 1/2; FCX, frontal cortex; GAPDH, glyceraldehyde 3-phosphate dehydrogenase; GASP-1, GPCR-associated sorting protein 1; GSK-3 β , glycogen synthase kinase 3 beta; HEK293, human embryonic kidney 293; h, human; M β CD, methyl β -cyclodextrin; MAPK, mitogen-activated protein kinases; PBS, phosphate buffered solution; p, phospho; Ser, serine; SPA, scintillation proximity assay; TBST, tris buffered saline with tween; Thr, threonine.

levels of dysbindin-1 and DTNBP1 gene expression were found in an isoform-dependent fashion in the hippocampus (Talbot *et al.* 2004), dorsolateral prefrontal cortex (Tang *et al.* 2009) and auditory association cortices (Talbot *et al.* 2011). Further, dysbindin-1 is implicated in the pathogenesis of diverse CNS disorders by virtue of its broad-based modulation of synaptic plasticity, cognition and neurotransmission (Papaleo *et al.* 2012; Zhang *et al.* 2012; Glen *et al.* 2014; Moran *et al.* 2014; Varela-Gomez *et al.* 2015).

Dysbindin-1 associates into complexes with multiple binding partners (Talbot 2009; Marley and von Zastrow 2010; Papaleo *et al.* 2012; Larimore *et al.* 2014; Lee *et al.* 2015) and regulates a large number of cellular processes including nuclear transcription (Fu *et al.* 2015), the activity of Calmodulin-dependent Kinase (Papaleo *et al.* 2012), dendritic spine dynamics (Jia *et al.* 2014), synaptic vesicle transport and release (Larimore *et al.* 2014), and receptor trafficking (Talbot 2009; Ghiani and Dell'Angelica 2011; Saggiu *et al.* 2013). In addition, dysbindin-1 modulates glutamatergic transmission (Shao *et al.* 2011), including mGluR-ERK coupling (Bhardwaj *et al.* 2015), α -amino-3-hydroxy-5-methylisoxazole-4-propionate receptor-mediated currents (Orozco *et al.* 2014) and both the localization and activity of NMDA receptor subunits in hippocampus (Tang *et al.* 2009; Glen *et al.* 2014). Dysbindin-1 also affects the activity of inhibitory Parvalbumin-positive GABAergic interneurons that form oscillating networks with corticostriatal pyramidal glutamatergic neurones (Carlson *et al.* 2011). Hence, disruption of dysbindin-1 in schizophrenia may participate in the asynchrony of pyramidal cell-GABAergic interneuron circuits in corticostriatal structures and the corresponding cognitive deficits, abnormal behaviors and perturbed mood (Lewis *et al.* 2012; Millan *et al.* 2012).

Not surprisingly, several studies have examined the interaction of dysbindin-1 with dopaminergic transmission (Papaleo *et al.* 2012). Indeed, dysbindin-1 regulates the trafficking of dopaminergic receptors, and knockdown of dysbindin-1 in human embryonic kidney 293 (HEK293) cells decreased the cycling of internalized D₂ receptors to lysosomes, resulting in enhanced cell surface expression (Marley and von Zastrow 2010). In this light, it is interesting that dysbindin-1 co-immunoprecipitates with GPCR-associated sorting protein1 (GASP-1), a protein involved in lysosomal receptor trafficking (Marley and von Zastrow 2010). Additionally, Ji *et al.* (2009) showed an increase in D₂ receptor cell surface expression – without a concomitant decrease of endocytosis – in cultures of cortical neurons from dysbindin-1 mutant mice compared to wild-type mice. This corroborates data from Iizuka and colleagues who found increased D₂ receptor density in neuroblastoma cells after treatment with siRNA against dysbindin-1 (Iizuka *et al.* 2007). Moreover, Papaleo and co-workers demonstrated alterations in the response of pyramidal neurons of the medial prefrontal cortex layers II/III to D₂ receptor activation

in dysbindin-1 knockout mice. Further, sensitivity to D₂ agonist- and antagonist-induced behavioral effects were enhanced and reduced, respectively, consistent with a higher membrane density (Papaleo *et al.* 2012). Finally, dysbindin-1-deficient sandy mice display learning and memory deficits, hyperactivity and a decreased ability to habituate to a novel 'environment', effects *potentially* linked to altered dopaminergic transmission although this remains to be proven (Cox *et al.* 2009). Underpinning the complex role of dysbindin-1, it shows an epistasis interaction with catechol-*O*-methyltransferase in that a mutation of dysbindin-1 *or* catechol-*O*-methyltransferase alone was favorable for cognition, whereas mutual disruption was deleterious (Papaleo *et al.* 2014).

Though the above observations support the notion that disruption of dysbindin-1 impacts dopaminergic transmission, an action potentially related to aberrant mood many questions remain. *First*, the influence of dysbindin-1 upon *signaling* at D₂ receptors has not yet been characterized. *Second*, the potential modulation by dysbindin-1 of closely related D₃ receptors has yet to be documented, so the relative contribution of D₂ versus D₃ sites to *in vivo* actions of dysbindin-1 *in vivo* remains uncertain. For example, evoked dopamine (DA) release in prefrontal cortex is diminished in dysbindin-1 knockout mice, yet how this relates to a putative interaction with D₂ versus D₃ autoreceptors remains unclear (Nagai *et al.* 2010). Further, like D₂ receptors, D₃ receptors are implicated in schizophrenia (Joyce and Millan 2005) yet they differentially control mood and cognition (Gross and Drescher 2012; Millan *et al.* 2012; Watson *et al.* 2012; Nakajima *et al.* 2013). *Third*, all studies to date have evaluated the effects of dysbindin-1 *depletion* on dopaminergic transmission (Iizuka *et al.* 2007; Ji *et al.* 2009; Marley and von Zastrow 2010), and the effects of dysbindin-1 itself (increased expression) has *not* as yet been evaluated.

Fourth, the latter question is of increasing interest in view of the issue of gene dosage. Both deficient *and* excess activity of core proteins disrupts function, especially in developmental disorders (Millan 2013) and recent evidence suggest that gene dosage may also be important for dysbindin-1 (Larimore *et al.* 2014; Mullin *et al.* 2015). Moreover, transfection of dysbindin-1 into pyramidal cells disrupted signaling at NMDA receptors, which are hypoactive in schizophrenia (Marek *et al.* 2010; Jeans *et al.* 2011; Moghaddam and Javitt 2012; Snyder and Gao 2013) while dysbindin-1 over-expression in mice led to a hyper-responsiveness to psychostimulants and decreased activity of genes like Arc that are substrates of synaptic plasticity (Shintani *et al.* 2014). Finally, increased levels of dysbindin-1 have been linked to epilepsy (Zhang *et al.* 2012).

In light of the above, the present studies examined the influence of *increasing* dysbindin-1 expression upon the cellular localization of recombinant human D₂ and D₃ receptors co-transfected in CHO and SH-SY5Y cells. In addition, since D₃ and D₂ receptors couple (in a similar but

not identical manner) to adenylyl cyclase (AC), Akt/glycogen synthase kinase 3 beta (GSK-3 β) and extracellular signal-regulated kinases1/2 (ERK1/2) pathways (Missale *et al.* 1998; Cussac *et al.* 1999; Newman-Tancredi *et al.* 1999; Muly 2002; Beom *et al.* 2004; Neve *et al.* 2004; Beaulieu *et al.* 2007; Lan *et al.* 2009; Cho *et al.* 2010; Mannoury la Cour *et al.* 2011), we examined the impact of dysbindin-1 upon these multiple signaling pathways under the control of D₃ and D_{2L} receptors.

Materials and methods

Antibodies and chemicals

All antibodies were purchased from Cell Signaling Technology Inc. (Danvers, MA, USA) if not mentioned otherwise. Mouse monoclonal and rabbit polyclonal antibodies recognize glyceraldehyde 3-phosphate dehydrogenase (#2118) and dysbindin (#4611) respectively. The phosphorylation of Akt and GSK-3 β was revealed using rabbit monoclonal antibodies raised against the phosphorylated forms of Akt (at Ser473 and Thr308 residues (#4060) and (#4065) respectively) and GSK-3 β (at Ser9) (#9322). Activated MAPK was detected with a mouse monoclonal antibody recognizing phosphorylated pp42^{mapk} (ERK2) and pp44^{mapk} (ERK1) forms (#4370) as described by Cussac *et al.* (1999). Further, secondary, horseradish peroxidase-linked anti-mouse and anti-rabbit IgG were used (#7076 and #7074 respectively). AC experiments were performed using an AlphaScreen[®] cAMP assay kit from Perkin Elmer, Milano, Italy. Plasmid cDNA extractions were undertaken using a Qiagen kit (#12143; Hilden, Germany) according to the manufacturer's instructions. Dopamine chlorhydrate, methyl- β -cyclodextrine and forskolin were purchased from Sigma (Saint Quentin Fallavier, France).

Cell culture and transfection

If not otherwise specified, experiments were performed using CHO cells which are well-known not to express endogenous D₂ or D₃ receptors, and which likewise do not express dysbindin (see Figure S1a and S1b) (Kanterman *et al.*, 1991; Cussac *et al.* 1999; Newman-Tancredi *et al.* 1999). CHO cells stably expressing human D_{2L} or D₃ receptors (4.6 and 12 pmol/mg protein respectively) were grown in HAM/F12 or Dulbecco's modified Eagle's medium (DMEM) as described by Cussac *et al.* (1999). CHO-D_{2L} and CHO-D₃ cell lines were transfected with either dysbindin-1A cDNA ('dysbindin-1') in a pIREShygro plasmid or an empty pIREShygro plasmid ('control') using a Polyplus jetPEI[™] kit (Cat. No 101-40, Illkirch, France) according to the manufacturer's instructions. Human SH-SY5Y neuroblastoma cells were grown in RPMI medium supplemented with 2 mM L-glutamine, penicillin (20 units/mL), streptomycin (20 μ g/mL) and 10% (vol/vol) heat-inactivated fetal bovine serum. Cells seeded on coverslips were transiently transfected with dysbindin-1A cDNA and/or hemagglutinin (HA)-tagged dopamine D₃ receptor cDNA, using FuGENE[®] 6 Transfection Reagent according to the manufacturer's instructions (Promega, Charbonnières, France). Transfection was performed in serum-free medium. After 48 h, cells were processed for immunocytochemistry.

CHO-D_{2L} cells were purchased from Euroscreen. CHO-D₃ cells were generated at the Institut de Recherches Servier. SH-SY5Y cells were obtained from the American Type Culture Collection.

Immunocytochemistry for dysbindin-1 protein and HA-tagged receptors

Transfected SH-SY5Y cells were fixed with 4% paraformaldehyde, rinsed three times in 0.1M phosphate-buffered saline (PBS 1 \times), then placed in PBS 1 \times solution with 0.75% horse serum + 0.03% Triton for 20–30 min at 22°C to block non-specific sites. Then cells were incubated with dysbindin-1 primary mouse monoclonal antibody (#sc-390626; Santa Cruz Biotechnology, Santa Cruz, CA, USA) and HA-probe primary rabbit polyclonal antibody (#sc-805; Santa Cruz Biotechnology, Heidelberg, Germany), overnight at 4°C. The next day, coverslips were rinsed three times in PBS 1 \times and incubated with secondary antibodies (Alexa Fluor 594 Goat anti-mouse and Alexa Fluor 488 Goat anti-rabbit, Invitrogen-Life Technologies, #A-21044 and A-11008 respectively, Monza, Italy) at 37°C for 2 h, followed by three washes with PBS 1 \times . After washing, coverslips were mounted using glycerol gelatin. Images were acquired using D-eclipse confocal fluorescence microscope (Nikon Instruments, Amsterdam, Netherlands).

Kinase phosphorylation

For determination of ERK1/2, Akt and GSK-3 β phosphorylation, cells were grown in six well plates until 90% confluence. After 24 h, cells were transferred into a 12-well dish and starved overnight in a serum-free medium after a washing step using the same medium. Kinase phosphorylation levels were determined after 5 min of incubation at 37°C with increasing concentrations of DA diluted in serum-free medium (Mannoury la Cour *et al.* 2011). For experiments using methyl β -cyclodextrine (M β CD), a cholesterol-depleting agent inhibiting lipid raft and caveolae/clathrin-mediated receptor endocytosis (Christian *et al.* 1997), cells were pre-treated with M β CD (at 10 mM) for 30 min at 37°C before stimulation by DA at a concentration inducing maximal stimulation (10 μ M). At the end of period, 250 μ L of Laemmli sample buffer containing 200 mM dithiothreitol was added. Whole-cell lysates were then boiled for 5 min at 95°C, sonicated and stored at –80°C.

Western immunoblotting

Western immunoblotting was performed as described, using 20 μ g protein/sample (Mannoury la Cour *et al.* 2011). Optical densities of western immunoblots were analyzed using a MCID Basic program (Micro Computer Imaging Device) and band intensity determined by excluding background noise. Values reported in the graphs generated using Prism[™] software (GraphPad Software, Inc., La Jolla, CA, USA) were expressed as a percentage of maximal effect induced by DA (10 μ M) and obtained by calculating the ratio between optical densities measured for each phospho-kinase and those of glyceraldehyde 3-phosphate dehydrogenase, used as a loading control, of the corresponding well.

Intact cell [³H]-sulpiride and membrane [³H]-methylspiperone binding assays

For determination of receptor internalization, cells were transferred into a poly-D-lysine coated 24 well plate and starved overnight prior to the experiment. Cells were then treated with either 0.2 mM sodium metabisulfite (control) or with sodium metabisulfite (Ref. 7681-57-4; Sigma) plus 10 μ M dopamine in HAM F-12 (GIBCO Ref. 21765) for CHO-D_{2L} cells or in DMEM (GIBCO Ref. 41965) for CHO-D₃ cells for 1 h at 37°C. Stimulation was stopped by

quickly cooling cells on ice and washing three times with ice-cold PBS. At low temperatures, receptor internalization is blocked (Maggio *et al.* 1995). Cells were then incubated for 3.5 h at 4°C with 0.5 mL of [³H]-Sulpiride (NET775250UC; Perkin Elmer), a highly hydrophilic radioligand that essentially detects cell surface dopamine receptors (Barbier *et al.* 1997; Namkung and Sibley 2004; Namkung *et al.* 2009a,b), diluted in PBS (final concentration, 6.4 nM). Non-specific binding was defined with 5 μM (+)-butaclamol. Cells were washed 3 times with ice-cold PBS and 250 μL of 1% Triton/5 mM EDTA in PBS and 2 mL of scintillation mixture (Perkin Elmer Scintillation agent PS) added to each well. Radioactivity was counted using a TopCount microplate scintillation counter (Perkin Elmer LifeSciences, Boston, MA, USA). Protein concentrations were adjusted using bichinchoninic acid protein assay kit and measured at 562 nm. Influence of dysbindin on binding affinity of dopamine D_{2L} and D₃ receptors was calculated with the radioligand [³H]-methylnspiperone (NET856250UC; Perkin Elmer) as described previously (Scarselli *et al.*, 2000).

Adenylyl cyclase experiments

Cyclic AMP (cAMP) levels were evaluated using the AlphaScreen[®] cAMP assay (Ref. 6760625D from Perkin Elmer) based on competition between endogenous cAMP and exogenously added biotinylated cAMP. CHO-D₁, CHO-D_{2L} and CHO-D₃ cells were seeded into 6-well dishes and transfected after 24 h with pIRESHygro plasmid containing human dysbindin-1A cDNA using a Polyplus jetPEI[™] kit mentioned above. After 24 h, cells were transferred into 24-well dishes in order to attain > 90% confluence, washed with warm 0.9% NaCl solution, then stimulated by DA (CHO-D₁) or by DA in the presence of 10 μM forskolin (CHO-D_{2L}, CHO-D₃) for 15 min at 37°C in the dark. Thereafter, cells were put on ice and washed with cold 0.9% NaCl solution to stop the reaction. Cells were lysed in a buffer containing 5 mM HEPES and 0.3% Tween-20. After 1 h incubation at 4°C, anti-cAMP Acceptor beads and biotinylated-cAMP/streptavidin Donor beads were added to lysates transferred into white OptiPlates[™]-384 (Perkin Elmer) and incubated for 2 h in the dark under agitation before measurements of cAMP levels using an EnSpire[™] Alpha 2390 Multilabel Reader (Perkin Elmer).

Antibody-capture/scintillation proximity assays studies of coupling to G α_{i3}

The influence of dysbindin-1 co-expression was evaluated on coupling of D_{2L} and D₃ receptors to G α_{i3} proteins. DA-induced activation of G α_{i3} subunits coupled to D_{2L} and D₃ receptors was assessed as described (Millan *et al.* 2004). Briefly, G α_{i3} protein activation was determined using a [³⁵S]GTP γ S binding assay coupled to immunocapture using mouse anti-G α_{i3} monoclonal antibody (SA-281; Biomol, San Diego, CA, USA) in 96-well optiplates (PerkinElmer Life Sciences). Detection was performed by scintillation proximity assay with beads coated with secondary anti-mouse antibodies (GE Healthcare, Vélizy, France). Radioactivity was counted on a TopCount microplate scintillation counter (Perkin Elmer LifeSciences) and data analyzed by non-linear regression using the program Prism (GraphPad Software Inc., San Diego, CA, USA).

Cell viability

After M β CD treatment, CHO-D_{2L} and CHO-D₃ cells were trypsinized and centrifuged at 22°C for 5 min at 100 g. After re-

suspension in DMEM, aliquots were diluted 1 : 1 with 0.5% trypan blue dissolved in 0.9% NaCl and the percentage of stained cells over the total number of cells evaluated after 3 min incubation at 22°C.

Statistical analysis

Cell surface expression levels were analyzed using a one-way ANOVA with Bonferroni corrections for multiple comparisons. For receptor binding experiments and cAMP accumulation assays, means \pm SEMs were determined. Signaling experiments were analyzed using non-linear regression with a variable slope model to generate sigmoidal dose-response curves fitting each replicate within the two treatments (with or without dysbindin-1). An F-test of residuals was performed to test the null hypothesis that the upper asymptote is the same in both experimental conditions (regardless of lower asymptote, midpoint and gradient), as opposed to the alternative hypothesis that the final asymptotic levels of the dysbindin-1 condition differed from those of the control condition. All other experiments were analyzed using two-way ANOVA.

Institutional approval

These studies have been approved by the Institut de Recherches Servier and by the Department of Biotechnological and Applied Clinical Sciences of the University of L'Aquila.

Results

Co-expression of dysbindin-1 reduces D_{2L} and D₃ receptor cell surface expression in CHO cells

No detectable endogenous dysbindin was seen in CHO-D_{2L} and CHO-D₃ cells (Figure S1a and b). Transfection of dysbindin-1 into CHO-D_{2L} and CHO-D₃ cells elicited a decrease of both D_{2L} and D₃ receptor levels at the plasma membrane of about 39% (Fig. 1a) and 41% (Fig. 1b), respectively, compared to their respective density measured in cells non-transfected with dysbindin-1 (control). Prolonged exposure of CHO-D₃ cells co-expressing dysbindin-1 with DA elicited a further decrease of receptor expression level to about 64% (Fig. 1b). The amplitude of density loss was similar to that observed in CHO-D₃ cells not expressing dysbindin-1 after stimulation by DA (10 μM for 1 h). For D_{2L} receptors, 1-h incubation with DA alone only induced a slight decrease of their expression level at the cell surface (20%) (Fig. 1a). However, as for D₃ sites, in the presence of dysbindin-1, prolonged exposure of CHO-D_{2L} cells to DA elicited a further reduction of cell surface density (42%) (Fig. 1a) compared to the DA-stimulated CHO-D_{2L} cells not expressing dysbindin-1.

Dysbindin-1 co-localizes with dopamine D₃ receptors in SH-SY5Y neuroblastoma cells

In SH-SY5Y cells transfected with dysbindin-1 only, diffuse immunostaining was seen throughout the cell (Fig. 2, upper panel). In cells transfected with HA-tagged D₃ receptor alone, using an anti-HA antibody punctiform labeling was observed primarily in the plasma membrane and its vicinity

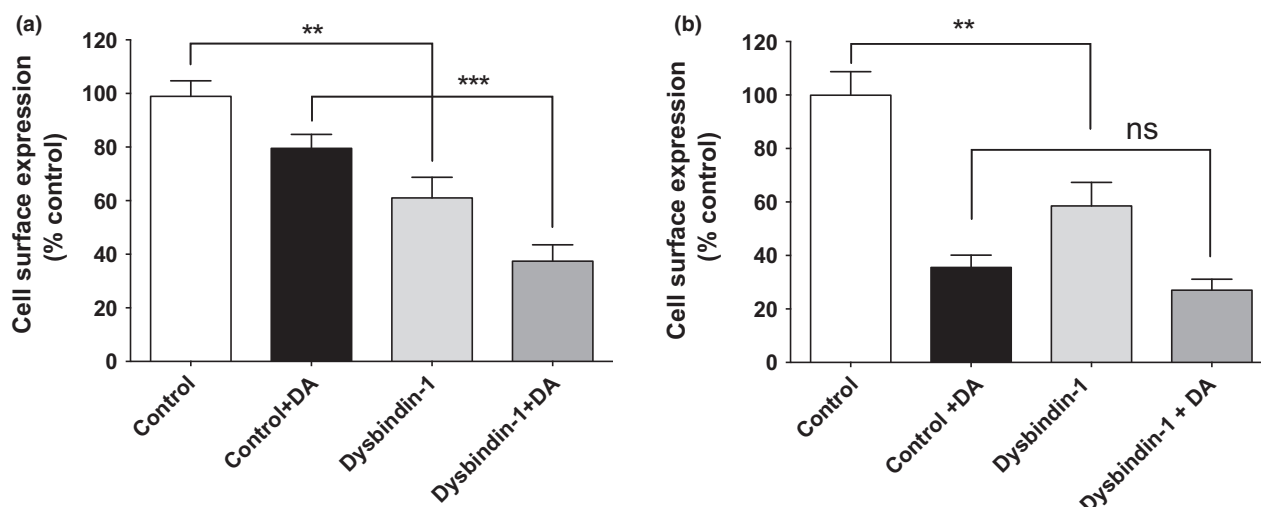


Fig. 1 Reduction of D_{2L} and D₃ receptor cell surface expression in CHO cells in the presence of dysbindin-1, and following prolonged exposure to DA. D_{2L} (a) and D₃ (b) receptor cell surface density were evaluated in the presence of dysbindin-1 or after 1 h exposure to DA (dark and dark grey bars) compared to medium (white and light gray

bars). Data represent the means \pm SEM of at least 6 replicates from three independent experiments. Data were analyzed using one-way ANOVA and Bonferroni's multiple comparison test. NS, not significant; ** $p < 0.01$; *** $p < 0.001$. $F = 20.36$ in CHO-hD_{2L} cells and $F = 26.25$ in CHO-hD₃ cells.

with a relative paucity in the cytosolic compartment. In these D₃ receptor transfected cells, endogenous dysbindin-1 was undetectable (Fig. 2, middle panel). Co-transfection of dysbindin-1 with HA-D₃R induced an intracellular redistribution of HA-D₃R labeling out of the plasma membrane such that it largely overlapped with dysbindin-1 immunostaining (Fig. 2, lower panel, merged).

Dysbindin-1 does not alter ligand binding affinity or potency in G₁₃-protein activation

Saturation binding experiments revealed the presence of a single and saturable binding site in CHO-D_{2L} and CHO-D₃ cells. In CHO-D_{2L} cells, the presence of dysbindin-1 had no significant effect upon affinity of [³H]-methylspiperone for D_{2L} receptors with K_D values of 0.23 ± 0.05 and 0.22 ± 0.05 nM in control and dysbindin-1 co-expressing cells respectively (Table 1). Similarly, no significant change in K_D values was seen in CHO-D₃ control compared to dysbindin-1-expressing cells ($K_D = 0.58 \pm 0.14$ and 0.47 ± 0.08 respectively) (Table 1). In addition, measurement of [³⁵S]-GTP γ S binding at G α_{13} -proteins showed that co-expression of dysbindin-1 had no significant effect on potency of DA for stimulating recruitment of G α_{13} -proteins by D_{2L} and D₃ receptors (Figure S2a and b, Table 1).

Dysbindin-1 decreases the efficacy of DA upon D_{2L} and D₃ receptor-mediated inhibition of forskolin-induced cAMP accumulation

As the presence of dysbindin-1 reduced cell surface density of D_{2L} and D₃ receptors, this decrease was expected to affect G α_i -protein mediated downstream signaling. In both cell

lines, dysbindin-1 diminished the efficacy of DA-mediated inhibition of forskolin-stimulated cAMP accumulation with 33% and 58% reduced efficacy in CHO-D_{2L} (Figure S3a) and CHO-D₃ (Figure S3b) cells respectively. In addition, dysbindin-1 reduced DA potency in both cell lines. In CHO-D_{2L} cells, EC₅₀ values increased from 167.3 nM in control to 855.6 nM in dysbindin-1 co-expressing cells, respectively, and from 14.4 nM in control to 38.9 nM in the dysbindin-1 co-expressing CHO-D₃ cell line (Table 1). In contrast to D_{2L} and D₃ receptors, dysbindin-1A did not influence D₁ receptor-mediated increases in cAMP accumulation (Figure S3c).

Dysbindin-1 reduces D_{2L} and D₃-mediated phosphorylation of Akt and GSK-3 β

The influence of dysbindin-1 on recruitment of the Akt/GSK-3 β pathway was examined by measuring phosphorylation of Akt (Ser473) and GSK-3 β (Ser9). As previously reported, DA induced a concentration-dependent increase of p-Akt (Ser473) and p-GSK-3 β (Ser9) in both CHO-D_{2L} and CHO-D₃ cells (Figs 3 and 4) (Mannoury la Cour *et al.* 2011). In the presence of dysbindin-1, activation of D_{2L} receptors still elicited an increase in Akt and GSK-3 β phosphorylation levels but with a significant reduction in maximal effect of DA of about 56% and 29% for p-S473-Akt (Fig. 3a) and p-S9-GSK-3 β (Fig. 4a), respectively, as compared to control cells (Table 2). In contrast, dysbindin-1 co-expression did not change the pEC₅₀ values of DA at D_{2L} receptors (Figs 3a and 4a, Table 2).

In CHO-D₃ cells, dysbindin-1 induced a more pronounced decrease in DA efficacy. The phosphorylation levels of Akt

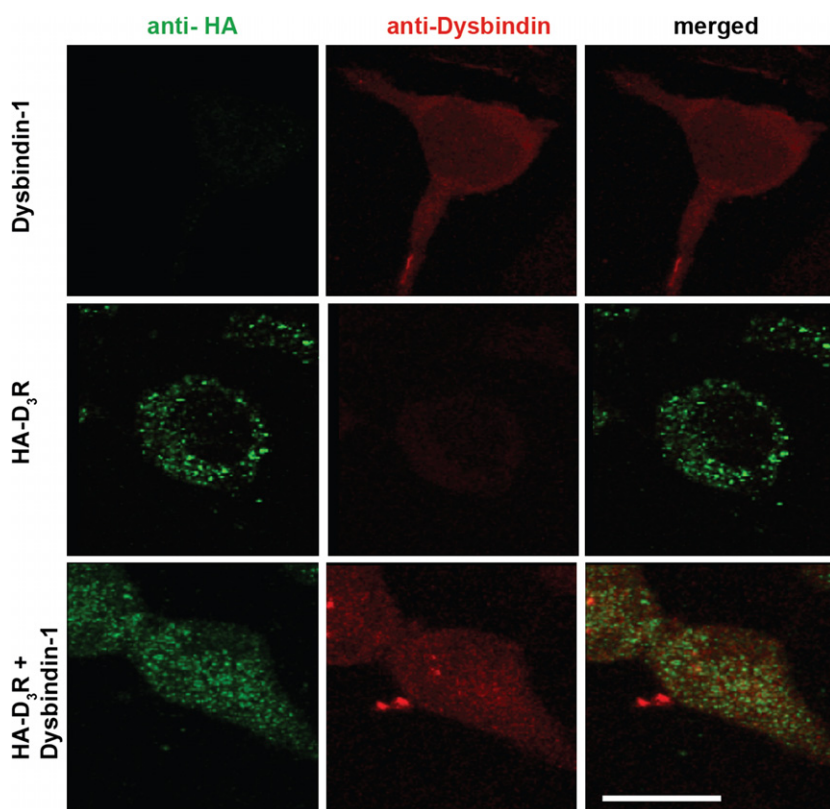


Fig. 2 Dysbindin-1 and dopamine D₃ receptor co-localize in SH-SY5Y cells. SH-SY5Y cells were transfected with cDNA encoding dysbindin-1 or HA-D₃ receptors alone, or co-transfected with dysbindin-1 plus HA-tagged D₃ receptors. HA-tagged receptors and dysbindin-1 are labeled in green and red, respectively. Merged panels indicate co-localization of HA-D₃ or receptors and dysbindin-1. The scale bar corresponds to 50 μ m.

Table 1 Influence of dysbindin-1 on [³H]-methylspiperone binding affinity (K_D) and on the potency (pEC_{50}) and efficacy (E_{max}) of dopamine (DA) for stimulation of [³⁵S]-GTP γ S binding and cAMP production in CHO cells stably expressing D_{2L} and D₃ receptors

	Binding		[³⁵ S]-GTP γ S binding				cAMP production			
	Control	Dysbindin-1	Control		Dysbindin-1		Control		Dysbindin-1	
	K_D (nM)		pEC_{50}	E_{max}	pEC_{50}	E_{max}	pEC_{50}	E_{max}	pEC_{50}	E_{max}
hD2L	0.23 \pm 0.05	0.22 \pm 0.05	6.22 \pm 0.14	59 \pm 7	6.20 \pm 0.09	71 \pm 5	6.78 \pm 0.17	93 \pm 7	6.07 \pm 0.06 ^a	62 \pm 7 ^b
hD3	0.58 \pm 0.14	0.47 \pm 0.08	8.28 \pm 0.16	42 \pm 3	8.14 \pm 0.11	46 \pm 3	7.84 \pm 0.06	96 \pm 3	7.41 \pm 0.04 ^c	41 \pm 5 ^d
hD1	ND	ND	ND	ND	ND	ND	8.18 \pm 0.03	96 \pm 5	8.20 \pm 0.01	98 \pm 6

Data represent the means \pm SEM of at least three independent determinations (^a p = 0.001; ^b p = 0.006; ^c p = 0.001; ^d p = 0.001).

(Ser473) and GSK-3 β were reduced by 57% and 44% respectively (Fig. 4b and Table 2). The potency of DA at D₃ receptors on Akt and GSK-3 β phosphorylation was slightly but not significantly decreased by co-expression of dysbindin-1 (Figs 3b and 4b, Table 2).

Dysbindin-1 reduces D_{2L} and D₃-mediated phosphorylation of ERK 1/2

As expected from previous reports, DA induced a concentration-dependent increase of ERK1/2 phosphorylation level in both cell lines (Fig. 5a and b). Recruitment of the ERK1/2 pathway by D_{2L} and D₃ receptors was also affected by co-expression of dysbindin-1 with a reduction of the influence

of DA upon pERK1/2 levels by about 48% in CHO-D_{2L} cells (Fig. 5a and Table 2) and 71% in CHO-D₃ cells compared to control cells (Fig. 5b and Table 2). However, no change in DA potency was observed in either cell line after co-expression of dysbindin-1 (Table 2).

The cholesterol-depleting agent M β CD attenuates the dysbindin-1 induced decrease in D_{2L} and D₃ receptor signaling

The potential involvement of receptor internalization in the dysbindin-induced decrease in D_{2L} and D₃ receptor signaling was evaluated using the cholesterol-depleting agent M β CD (Christian *et al.* 1997). As M β CD can reduce cell viability

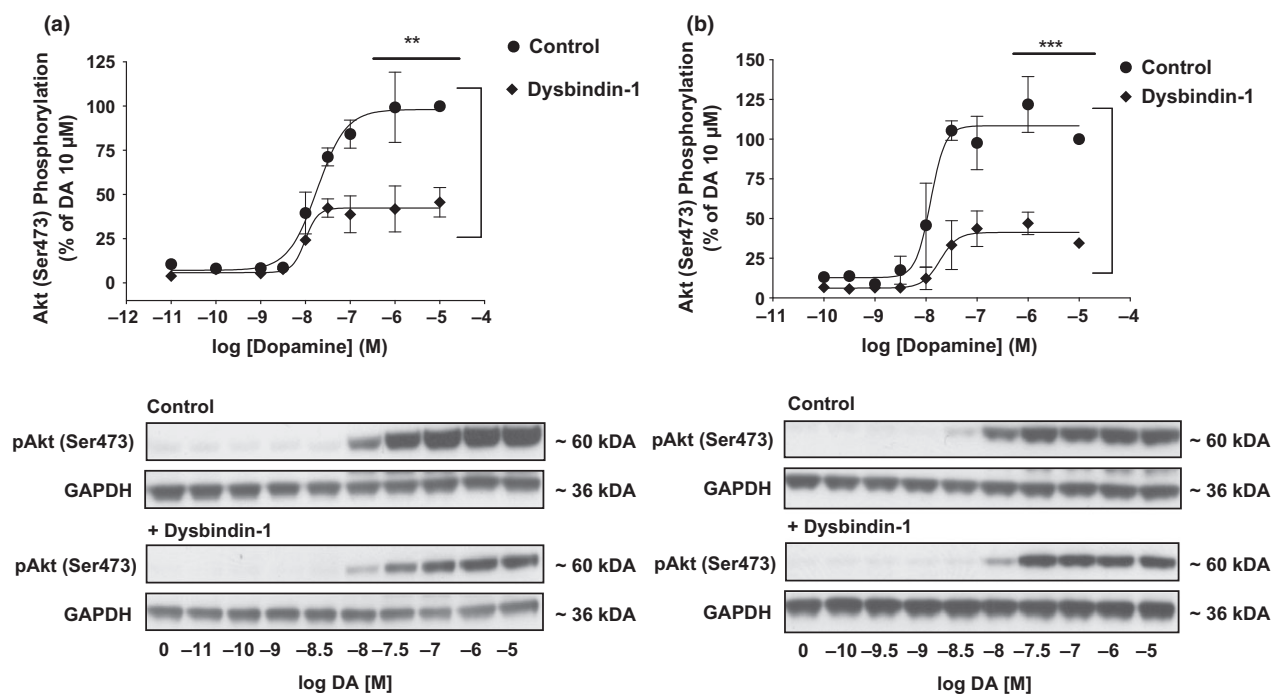


Fig. 3 Decrease of DA efficacy for Akt (Ser473) phosphorylation in dysbindin-1 expressing CHO-D_{2L} and CHO-D₃ cells. Akt (Ser473) phosphorylation was evaluated in control and dysbindin-1 co-expressing CHO-D_{2L} (a) and -D₃ (b) cells after stimulation with increasing concentrations of DA. Akt phosphorylation levels in cell lysates were

quantified by immunoblotting. Western blots are representative of experiments performed at least three times. A two-way ANOVA compared effects of DA on efficacy in control versus dysbindin-1 conditions: p-S473-Akt, ** $p = 0.002$ ($F = 19.84$) in CHO-D_{2L} cells (a) and p-S473-Akt *** $p = 0.003$ ($F = 32.91$) in CHO-D₃ cells (b).

(Ulloth *et al.* 2007), its toxicity for CHO-D_{2L} and CHO-D₃ cells was tested by trypan blue exclusion. After 30 min exposure to M β CD, the percentage of cell death in CHO-D_{2L} ($4.5 \pm 1.5\%$) and CHO-D₃ ($7.6 \pm 1.7\%$) cells was not significantly different from untreated CHO-D_{2L} ($2.5 \pm 1.6\%$) and CHO-D₃ (4.0 ± 2.4) cells. This demonstrates a lack of toxicity under these conditions.

As shown above, dysbindin-1 attenuated the inhibition of forskolin-induced cAMP production by DA (10 μ M) in both CHO-D_{2L} (Fig. 6a) and CHO-D₃ (Fig. 6b) cells. Pre-incubation with M β CD led to a decrease in DA-mediated inhibition of forskolin-stimulated cAMP production in control CHO-D_{2L} and CHO-D₃ cells (43% and 38% respectively). Nevertheless, co-expression of dysbindin-1 in the presence of M β CD did not result in any further significant decrease of DA efficacy (Fig. 6a and b).

In CHO-D₃ cells, co-expression of dysbindin-1 significantly inhibited the DA-induced increase of pERK1/2 levels. M β CD attenuated by itself the effect of DA on pERK1/2 levels (76%) but prevented a further inhibition due to co-expression of dysbindin-1 (89%) (Fig. 7b and Table 3). In CHO-D_{2L} cells, M β CD caused a slight reduction (32%) of the DA-mediated increase in ERK1/2 phosphorylation and reversed the effect of dysbindin-1 co-expression (35%) (Fig. 7a and Table 3).

Discussion

Dysbindin-1 co-expression decreases D₂ and D₃ cell surface receptor density in CHO and SH-SY5Y cells

Using the hydrophilic radioligand, [³H]-Sulpiride (Barbier *et al.* 1997), and a protocol previously described for quantification of plasma membrane-localized D_{2L} receptors (Namkung and Sibley 2004; Namkung *et al.* 2009b), dysbindin-1 co-expression led to a down-regulation of both D_{2L} and D₃ receptor membrane density in CHO cells. These findings mirror the effects of siRNA-mediated knockdown of dysbindin-1, which increased cell surface expression of D₂, but not D₁, receptors in SH-SY5Y cells and primary cultures of rat cortical neurons (Iizuka *et al.* 2007). Similar results were observed herein with D₃ receptors for which dysbindin-1 co-expression reduced cell surface density even more markedly than for D_{2L} receptors. In addition, dysbindin-1 and D₃ receptors co-localized in the internal compartment of neuroblastoma SH-SY5Y cells, supporting a fundamental role of dysbindin-1 in D₃ receptor trafficking.

Knock-down studies of 'Muted', which, along with its binding partner dysbindin-1, is an essential component of the biogenesis of lysosome-related organelles complex 1 (BLOC-1), also increased cell surface expression of D₂ receptors (Iizuka *et al.* 2007), consistent with the important

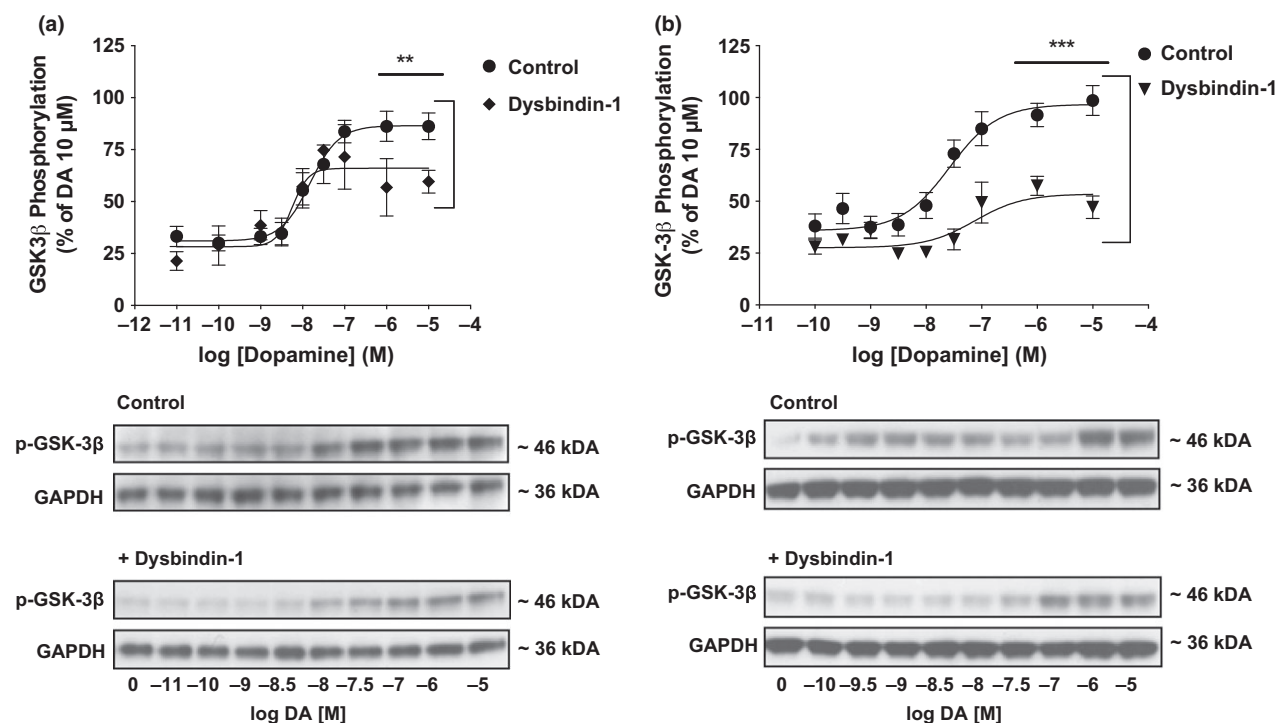


Fig. 4 Dysbindin-1-induced decrease in DA efficacy for glycogen synthase kinase 3 beta (GSK-3 β) phosphorylation in CHO-D_{2L} and CHO-D₃ cells. Phosphorylation levels of GSK-3 β were quantified in cell lysates by immunoblotting after incubation of CHO-D_{2L} (a) and CHO-D₃ (b) cells with increasing concentrations of DA. Western blots correspond to representative experiments where glyceraldehyde

3-phosphate dehydrogenase (GAPDH) was used as a control for well loading. For each curve, data are means \pm SEM of at least three independent experiments. A two-way ANOVA compared DA effects on efficacy in control versus dysbindin-1 co-expression conditions: p-S9-GSK-3 β $**p = 0.009$ ($F = 8.21$) in CHO-D_{2L} cells and $***p = 0.0001$ ($F = 42.97$) in CHO-D₃ cells.

Table 2 Potency and efficacy of DA for induction of Akt, GSK-3 β and ERK1/2 phosphorylation in dysbindin-1-transfected versus control CHO-D_{2L} and CHO-D₃ cells

	pERK1/2		pAkt(Ser437)		pGSK β (Ser9)	
	pEC ₅₀	E _{max} (%)	pEC ₅₀	E _{max} (%)	pEC ₅₀	E _{max} (%)
hD _{2L}						
Control	7.84 \pm 0.05	96 \pm 3	7.74 \pm 0.12	98 \pm 5	7.83 \pm 0.15	87 \pm 4
Dysbindin-1	8.21 \pm 0.13	48 \pm 3 ^{****}	8.00 \pm 0.12	42 \pm 3 ^{**}	8.25 \pm 0.23	58 \pm 5 ^{**}
hD ₃						
Control	7.12 \pm 0.08	93 \pm 4	7.37 \pm 0.11	98 \pm 6	7.60 \pm 0.16	97 \pm 4
Dysbindin-1	7.52 \pm 0.25	22 \pm 4 ^{****}	7.72 \pm 0.18	41 \pm 4 ^{***}	7.30 \pm 0.20	53 \pm 3 ^{***}

DA, dopamine; GSK-3 β , glycogen synthase kinase 3 beta; ERK1/2, extracellular signal-regulated kinases1/2

Data represent the mean \pm SEM of at least three independent determinations ($**p < 0.01$; $***p < 0.001$ $****p < 0.001$).

contribution of BLOC-1 related proteins in the trafficking of GPCRs. Reflecting a role for BLOC-1, dysbindin-1 depletion inhibited D₂ receptor proteolysis after their internalization *without* significantly affecting ligand-induced endocytosis *per se* in HEK cells and cortical neurons (Ji *et al.* 2009; Marley and von Zastrow 2010). These data suggest that, in addition to regulating receptor internalization of D_{2L} and D₃ receptors directly, dysbindin-1 may interfere with their recycling to the plasma membrane by facilitating their

trafficking to lysosomes. However, this hypothesis requires further elucidation.

Under control conditions, the magnitude of receptor internalization differed between D_{2L} and D₃ receptors, with the less pronounced decrease of D_{2L} receptor density (20%) versus D₃ sites (> 60%) following prolonged DA exposure in good agreement with previous observations (Itokawa *et al.* 1996; Kim *et al.* 2004). Mirroring the proposal of Ji *et al.* (2009), this difference might reflect the more rapid recycling

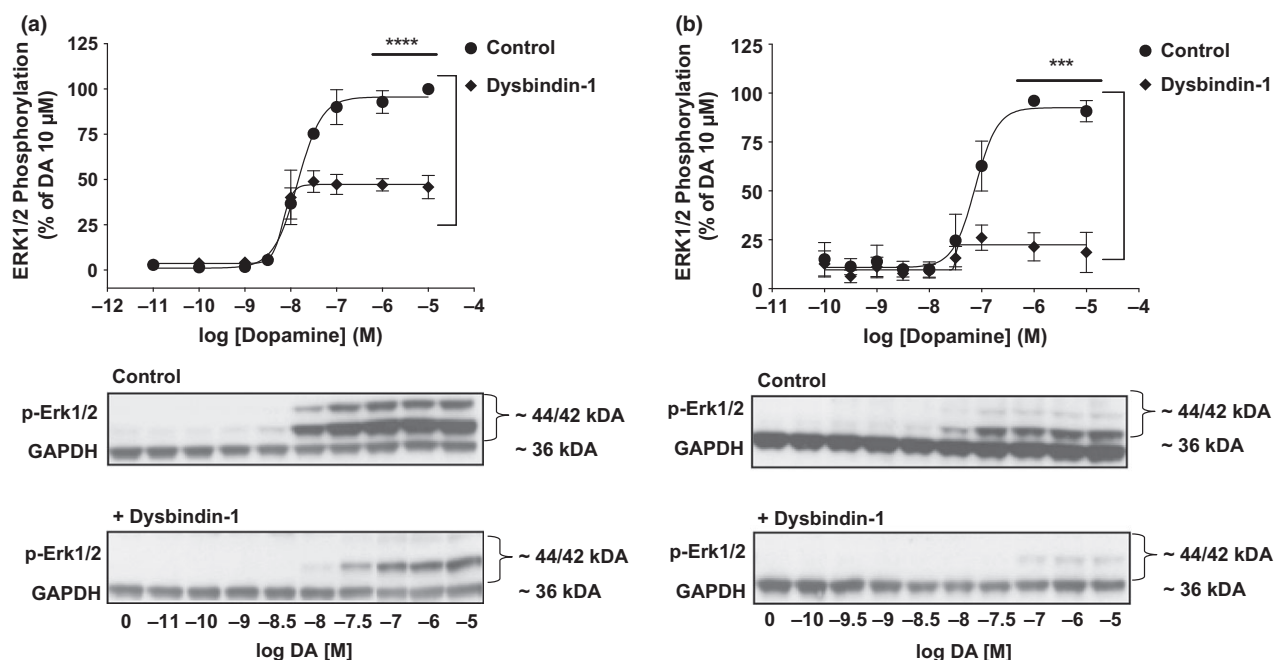


Fig. 5 Decreased efficacy for DA-induced phosphorylation of ERK1/2 in CHO-D_{2L} and CHO-D₃ cells co-expressing dysbindin-1. CHO-D_{2L} (a) and CHO-D₃ (b) cells co-expressing dysbindin-1 or not (control) were incubated with increasing concentrations of DA. Levels of pERK1/2 were detected by immunoblotting in cell lysates. Western blots below each curve are representative of experiments performed at least three times

where glyceraldehyde 3-phosphate dehydrogenase (GAPDH) was used as a well loading control. For each curve, data are the means \pm SEM of at least three independent experiments. A two-way ANOVA compared DA efficacy in control versus dysbindin-1 co-expression conditions: p-Thr202/Tyr204-ERK1/2 **** $p < 0.0001$ ($F = 125.9$) in CHO-D_{2L} cells and *** $p < 0.001$ ($F = 109.2$) in CHO-D₃ cells.

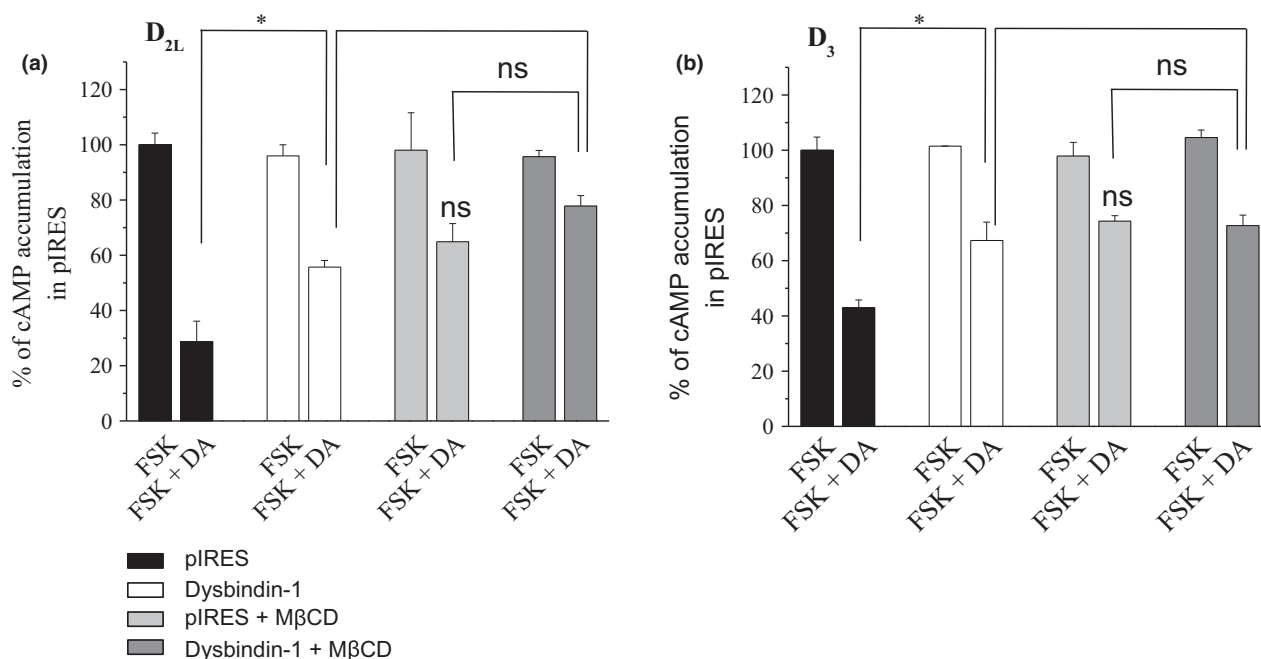


Fig. 6 Influence of M β CD on the inhibitory effect of dysbindin-1 on adenylyl cyclase (AC) activity. CHO cells stably expressing D_{2L} cells (a) and D₃ (b) receptors were treated with medium only or pre-incubated with M β CD. Forskolin (10 μ M) was added to stimulate adenylyl cyclase before activation of D_{2L} and D₃ receptors by DA

(10⁻⁵ M). Control cells (pIRES) treated with forskolin were defined as 100%. Two-way ANOVA was used to compare control and dysbindin-1 co-expressing cells. (ns, not significant; * $p < 0.05$). $F = 14.64$ for CHO-D_{2L} cells and $F = 12.13$ for CHO-D₃ cells.

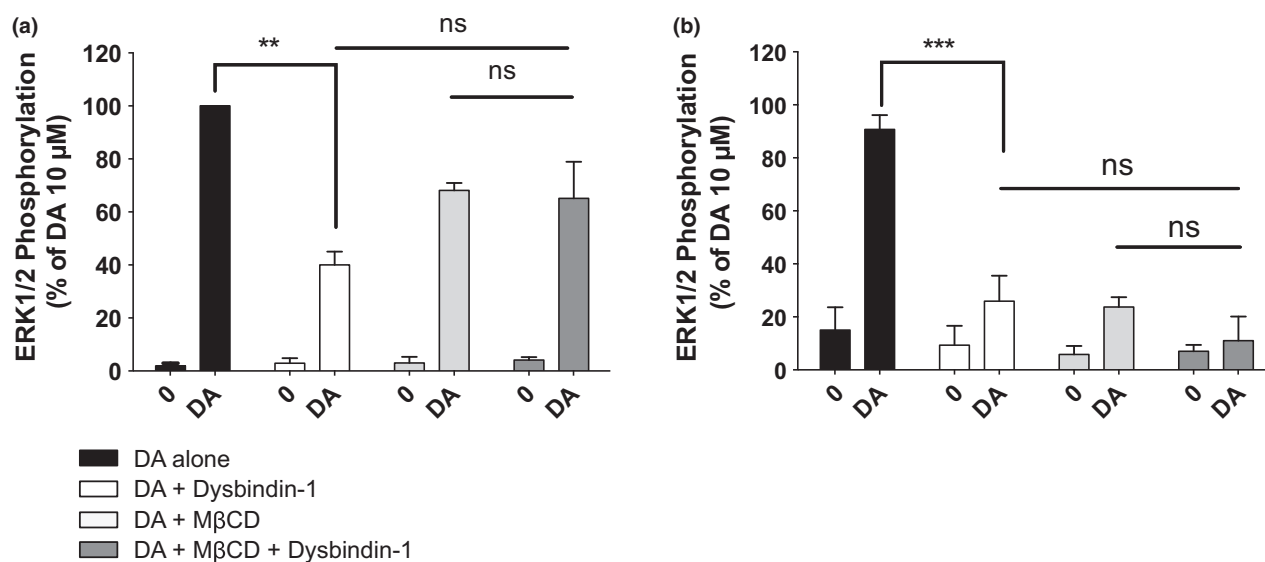


Fig. 7 Influence of M β CD on the inhibitory effect of dysbindin-1 on ERK1/2 phosphorylation in CHO-D_{2L} and -D₃ cells. ERK1/2 phosphorylation levels were detected by immunoblotting in CHO-D_{2L} (a) and CHO-D₃ cells (b) pre-treated with M β CD and activated by DA (10⁻⁵ M). The pERK1/2 levels measured in control cells after DA

stimulation (defined as 100%). Histograms represent the compilation of data generated by at least 3 independent experiments. A two-way ANOVA compared DA-treated control (empty vector) to dysbindin-1 co-expressing cells: ns, not significant; ***p* < 0.01; ****p* < 0.001). *F* = 6.5 for CHO-D_{2L} cells and 16.67 for CHO-D₃ cells.

Table 3 Influence of M β CD on DA-induced ERK1/2 phosphorylation in dysbindin-1-transfected versus control CHO-D_{2L} and CHO-D₃

	pERK1/2			
	Control	Dysbindin-1	M β CD	Dysbindin-1 + M β CD
CHO-hD _{2L}				
No treatment	2 ± 1	3 ± 2	3 ± 2	4 ± 1
DA (10 μM)	100 ± 2	40 ± 5	68 ± 3	65 ± 14
CHO-hD ₃				
No treatment	15 ± 8	9 ± 7	6 ± 3	68 ± 3
DA (10 μM)	91 ± 5	26 ± 9	24 ± 4	11 ± 9

DA, dopamine; ERK1/2, extracellular signal-regulated kinases1/2; M β CD, methyl β cyclodextrine.

Values represent efficacies measured under basal conditions (no treatment) or after DA stimulation. They are expressed as a percentage of the maximal effect of DA (10 μM) under control conditions (100%). Data are the means ± SEM of at least three independent determinations. For statistical analysis refer to Figure 7.

of D_{2L} versus D₃ receptors to the cell surface, thereby counteracting the effect of DA (Ji *et al.* 2009). Interestingly, a phosphorylation-independent association and dissociation with β -arrestin-2 is important for desensitization and re-sensitization of D_{2S} receptors in HEK293 cells (Cho *et al.* 2010). Despite the current absence of support for a similar role of β -arrestins in CHO cells, the rapid recycling of D₂ receptors to the cell surface after prolonged exposure to DA may imply a similar mechanism, reminiscent of the role of

β -arrestins in the regulation of D₂ receptors in rat striatal neurons (Macey *et al.* 2004; Skinbjerg *et al.* 2009). The higher magnitude of DA-induced D₃ versus D₂ receptor internalization suggests a relatively slow rate of D₃ recycling to the plasma membrane after agonist stimulation, or that they are rapidly degraded following endocytosis. These remain to be further characterized.

As regards the influence of dysbindin-1, no significant difference in the magnitude of DA-induced internalization was seen between D_{2L} and D₃ receptors in cells co-expressing dysbindin-1. It is possible that dysbindin-1 promotes D_{2L} receptor trafficking from early endosomes to lysosomes thereby interfering with their rapid recycling to the plasma membrane: this would explain the further decrease of D_{2L} receptor density (60%) observed in DA-treated cells after co-expression of dysbindin-1. As regards molecular mechanisms involved in the fate of internalized D_{2L} sites, their redirection to lysosomes by dysbindin-1 likely involves a direct interaction with GASP-1, a protein that promotes the proteolysis of many GPCRs following endocytosis (Bartlett *et al.* 2005; Marley and von Zastrow 2010) and controls the degradation of D₂ receptors in HEK cells exposed to DA (Thompson and Whistler 2011). The D_{2L} receptors remaining in endosomes would, on the other hand, be rapidly recycled to the plasma membrane with the assistance of the small GTPase, ADP-ribosylation factor 6 (Cho *et al.* 2013). GASP proteins may also be involved in the regulation of D₃ receptors, although this remains to be demonstrated in CHO cells (Thompson and Whistler 2011).

Thus, despite a similar and negative impact of dysbindin-1 upon cell surface density of D_{2L} and D₃ receptors, molecular mechanisms involved in their cycling may subtly differ, paralleling differences in their signaling seen in other recombinant systems (Missale *et al.* 1998; Cussac *et al.* 1999; Lan *et al.* 2009; Namkung *et al.* 2009a; Cho *et al.* 2010). In addition, as experiments here were undertaken with the long isoform (D_{2L}), we cannot exclude that further differences might be found with the short receptor, D_{2S}.

Dysbindin-1 co-expression decreases multiple pathways of D_{2L} and D₃ receptor signaling

Inasmuch as GPCRs couple to multiple transduction mechanisms *via* G-protein-dependent and independent mechanisms, acting both at the cell surface and even following internalization (Jong *et al.* 2009; Purgert *et al.* 2014), the hitherto-unaddressed question of the influence of dysbindin-1 on D₃ and D_{2L} receptor signaling is important. As regards the canonical G_{i/o} AC pathway, dysbindin-1 decreased the efficacy of D_{2L} and D₃ receptor-mediated attenuation of forskolin-induced cAMP accumulation. By analogy to the selective influence of dysbindin-1 upon D₂ versus D₁ receptor cell surface expression (Iizuka *et al.* 2007), the reduction of DA efficacy at both D_{2L} and D₃ expressing cells was specific in that D₁ receptor-mediated enhancement of cAMP accumulation was not affected by dysbindin-1 co-expression, confirming the minor influence of dysbindin on this receptor (Iizuka *et al.* 2007). As cAMP elicits phosphorylation of cAMP response element-binding protein (CREB), by attenuating the influence of D_{2L} and D₃ receptor activation on AC dysbindin-1 should indirectly promote levels of phospho-CREB in both CHO-D_{2L} and CHO-D₃ cell lines. Accordingly, the present data mirror a previous study showing that siRNA knockdown of dysbindin-1 in rat cortical neurons amplifies the influence of the D₂ agonist quinpirole upon phosphorylation of CREB (Iizuka *et al.* 2007).

Underpinning the above observations with AC, dysbindin-1 reduced the DA-induced phosphorylation of several other cellular signals prototypically engaged by D_{2L} and D₃ receptors: *first*, Akt (Ser473) and its molecular target, GSK-3 β , and *second*, pERK1/2. Collectively, these data suggest a broad-based influence of dysbindin-1 upon D_{2L} and D₃ receptor-mediated signal transduction. Intriguingly, however, there were differences in the impact of dysbindin-1 on signaling cascades.

Dysbindin-1 differentially affects agonist potency and efficacy for coupling to adenylyl cyclase compared to ERK1/2

The present observations are consistent with classical receptor-occupancy theory (Kenakin 1982) and studies of post-synaptic dopaminergic receptors (Meller *et al.* 1987) in suggesting that DA needs to occupy a substantial proportion of D_{2L} and D₃ receptors to maximally inhibit cAMP production and phosphorylation of ERK1/2, Akt and GSK-

3 β (Meller *et al.* 1987; Missale *et al.* 1998; Tadori *et al.* 2009). Accordingly, the decrease of receptor density elicited by dysbindin-1 will have reduced receptor reserve and the number of 'spare receptors' leading to a reduction in the efficacy of DA (Kenakin 1982).

On the other hand, the relationship of GPCR to agonist *affinity* is not so straightforward. Indeed, while dysbindin-1 did not modify the potency of DA for induction of Akt/GSK-3 β and ERK1/2 signaling, it induced a rightward shift of the concentration-response curve of DA for both D_{2L} and D₃ receptor-mediated inhibition of cAMP production. This blunted potency of agonist-recruitment of AC does not reflect a genuine 'diminution' of agonist affinity since no alteration of DA potency was seen at the level of G-protein activation in [³⁵S]-GTP γ S binding studies. In addition, supporting the idea that a change in EC₅₀ values for DA may be related to the reduction of receptor density at the cell surface: (i), similar K_D values were measured in CHO-D_{2L} and CHO-D₃ cells co-expressing dysbindin-1 compared to control cells and (ii), a single and saturable binding site was detected in both CHO-D_{2L} and CHO-D₃ cells co-expressing dysbindin-1. Corroborating this notion, previous studies on β -adrenoceptors reported a positive correlation between agonist potency and receptor number at the cell surface (Bouvier *et al.* 1988; Whaley *et al.* 1994). In addition, mirroring the present data for AC, Kenakin and Morgan (1989) showed that changes in the receptor/G-protein ratio negatively influence both agonist affinity and efficacy leading to a rightward shift of agonist concentration-response curves, together with a decrease of maximal effects in a context of a receptor depletion (Kenakin and Morgan 1989).

In contrast to cAMP formation, dysbindin-1 did *not* significantly influence the potency of DA for D₂ and D₃ receptor-mediated activation of Akt/GSK-3 β and ERK1/2, which are recruited partly through *non*-G-protein-dependent mechanisms involving β -arrestins, receptor internalization and/or recruitment of Src kinases (Oak *et al.* 2001; Nair and Sealfon 2003; Beom *et al.* 2004; Kim *et al.* 2004; Wang *et al.* 2005; Mannoury la Cour *et al.* 2011). This involvement of *multiple* G-protein-dependent and independent mechanisms in the stimulation ERK1/2 and Akt/GSK-3 β results in marked signal amplification that counteracts the loss of receptor density, consistent with a decrease of efficacy but not of affinity (Kenakin 2006).

Blunting of DA-induced phosphorylation of ERK1/2 by dysbindin-1 may be related to altered cellular localization of D₂ and D₃ receptors

The cholesterol-depleting agent, M β CD, is widely used as an inhibitor of receptor internalization since it disrupts lipid rafts and caveolar endocytosis, as well as preventing the formation of clathrin-coated pits (Christian *et al.* 1997; Rodal *et al.* 1999). An important issue in the use of M β CD is possible cytotoxic effects and alterations of cell morphology (Hinze

et al. 2012), but control experiment suggested that this was not the case in the present studies (see Results).

M β CD treatment decreased both D_{2L} and D₃ receptor signaling in CHO cells, corroborating studies performed in HEK cells that showed a critical role of cholesterol-rich lipid rafts for D₂ receptor signaling (Sharma *et al.* 2013). In the presence of M β CD, dysbindin-1 induced no further decrease in efficacy of DA at D_{2L} and D₃ receptors. This absence of an additive effect of dysbindin-1 suggests that the impact of dysbindin-1 co-expression upon D_{2L} and D₃ receptor signaling requires lipid masks, cholesterol-rich microdomains and/or clathrin- and caveolar-dependent processes disrupted by M β CD treatment (Rodal *et al.* 1999; Subtil *et al.* 1999; Zidovetzki and Levitan 2007).

Interestingly, β -arrestins act as adapters between phosphorylated receptors and clathrin-coated pits, yet were *not* involved in the phosphorylation of ERK1/2 by D_{2L} receptors in CHO cells (Kim *et al.* 2004). Indeed, the D_{2L}-mediated increase of pERK1/2 is essentially driven through receptor tyrosine kinase transactivation not requiring β -arrestin-regulated endocytosis (see above) (Oak *et al.* 2001; Kim *et al.* 2004). Thus, the partial inhibitory effect of M β CD upon DA-induced ERK1/2 phosphorylation was observed in CHO-D_{2L} cells suggests that an agonist-dependent translocation of D_{2L} receptors in caveolae might be involved in the recruitment of ERK1/2. This would resemble what has been described with caveolin-2 for D₁ receptor-mediated AC activation (Yu *et al.* 2004).

In contrast to D_{2L} receptors, M β CD abolished DA-elicited ERK1/2 phosphorylation in control CHO-D₃ cells indicating a requirement for β -arrestin/clathrin-dependent or caveolae-mediated endocytosis for ERK1/2 activation. However, the exact mechanism by which D₃ receptors elicit the phosphorylation of ERK1/2 in CHO cells remains to be elucidated, in particular with regard to a potential influence of compartmentalization in their signaling (Sharma *et al.* 2013). The suppression of D₃ receptor-mediated ERK phosphorylation by dysbindin-1 also reinforces the connection between D₃ receptor internalization and recruitment of this signal.

Finally, further studies are needed to address the relevance to dysbindin-1-mediated control of D_{2L}/D₃ receptor signaling of receptor internalization and trafficking to lysosomes through the BLOC-1 complex.

General discussion and conclusions

Since these studies were performed *in vitro* and we looked at the effects of *increased* dysbindin-1 expression, it is challenging to *directly* relate them to schizophrenia where dysbindin-1 is dysfunctional. Nonetheless, together with findings outlined in the introduction, they provide a new dimension to collectively strong evidence that dysbindin-1 negatively controls the operation of D₂ receptors and, as revealed herein, D₃ receptors. This is intriguing since D₃ and D₂ receptors exert an opposite negative and positive

influence, respectively, upon cognition (Lacroix *et al.* 2003; Millan *et al.* 2007, 2012; Loiseau and Millan 2009; Micale *et al.* 2010; Gross and Drescher 2012; Watson *et al.* 2012; Nakajima *et al.* 2013). Cognition is impaired in schizophrenia (and animal models thereof): this impairment *could* be related to increased cell surface expression of D₃ rather than D₂ receptors in frontal cortex, a possibility justifying experimental validation. In addition, increased D₃ receptor levels in the striatum and forebrain of schizophrenic patients (Gurevich *et al.* 1997) are consistent with reduced dysbindin-1 expression, although any causal relationship likewise remains to be proven. Finally, as mentioned in the introduction, there are CNS disorders where dysbindin-1 levels are increased, and its over-expression disrupts NMDA receptor-mediated transmission and synaptic plasticity (Jeans *et al.* 2011; Zhang *et al.* 2012; Shintani *et al.* 2014).

To conclude, the present data adopt an approach complementary to previous work in showing that *increasing* dysbindin-1 expression modulates cell surface density of D_{2L} receptors, and they extend previous data in demonstrating an impact upon cellular signaling. Moreover, they demonstrate that similar, although not identical, dysbindin-1 mediated actions blunt the operation of D₃ receptors. Future studies should more clearly characterize the molecular substrates underlying the influence of dysbindin-1 upon D₃ and D_{2L} receptors, and more thoroughly explore the functional repercussions, in particular for schizophrenia and other CNS disorders in which dysbindin-1 is implicated.

Acknowledgments and conflict of interest disclosure

We thank Valerie Pasteau and Blandine Puvion for their help with tissue culture and useful technical advice as well as Gavin Kelly, The Francis Crick Institute, for help with statistical analysis. This work was financially supported by the Institut de Recherches Servier (NS, MJM and CML) and by the Cariplo Foundation, Scientific Research in Biomedicine 2011 (CR, SR and RM). The authors have no conflict of interest to declare.

All experiments were conducted in compliance with the ARRIVE guidelines.

Supporting information

Additional supporting information may be found in the online version of this article at the publisher's web-site:

Figure S1. Dysbindin-1 expression levels upon transfection in CHO-D_{2L} and CHO-D₃ cells.

Figure S2. Lack of influence of dysbindin-1 on D_{2L} and D₃ receptor coupling to G α i3.

Figure S3. Dysbindin-1-induced decrease of DA-mediated inhibition of forskolin-induced cAMP accumulation in CHO cells expressing D_{2L} and D₃ receptors.

Figure S4. Dysbindin-1-induced decrease of DA efficacy for Akt (Thr308) phosphorylation by in CHO-D_{2L} and CHO-D₃ cells.

References

- Ayalew M., Le-Niculescu H., Levey D. F. *et al.* (2012) Convergent functional genomics of schizophrenia: from comprehensive understanding to genetic risk prediction. *Mol. Psychiatry* **17**, 887–905.
- Barbier P., Colelli A., Maggio R., Bravi D. and Corsini G. U. (1997) Pergolide binds tightly to dopamine D₂ short receptors and induces receptor sequestration. *J. Neural. Transm.* **104**, 867–874.
- Bartlett S. E., Enquist J., Hopf F. W. *et al.* (2005) Dopamine responsiveness is regulated by targeted sorting of D₂ receptors. *Proc. Natl Acad. Sci. USA* **102**, 11521–11526.
- Beaulieu J. M., Tirota E., Sotnikova T. D., Masri B., Salahpour A., Gainetdinov R. R., Borrelli E. and Caron M. G. (2007) Regulation of Akt signaling by D₂ and D₃ dopamine receptors in vivo. *J. Neurosci.* **27**, 881–885.
- Benson M. A., Newey S. E., Martin-Rendon E., Hawkes R. and Blake D. J. (2001) Dysbindin, a novel coiled-coil-containing protein that interacts with the dystrobrevins in muscle and brain. *J. Biol. Chem.* **276**, 24232–24241.
- Beom S., Cheong D., Torres G., Caron M. G. and Kim K. M. (2004) Comparative studies of molecular mechanisms of dopamine D₂ and D₃ receptors for the activation of extracellular signal-regulated kinase. *J. Biol. Chem.* **279**, 28304–28314.
- Bhardwaj S. K., Ryan R. T., Wong T. P. and Srivastava L. K. (2015) Loss of dysbindin-1, a risk gene for schizophrenia, leads to impaired group 1 metabotropic glutamate receptor function in mice. *Front. Behav. Neurosci.* **9**, 72.
- Bouvier M., Hausdorff W. P., De Blasi A., O'Dowd B. F., Kobilka B. K., Caron M. G. and Lefkowitz R. J. (1988) Removal of phosphorylation sites from the beta 2-adrenergic receptor delays onset of agonist-promoted desensitization. *Nature* **333**, 370–373.
- Carlson G. C., Talbot K., Halene T. B. *et al.* (2011) Dysbindin-1 mutant mice implicate reduced fast-phasic inhibition as a final common disease mechanism in schizophrenia. *Proc. Natl Acad. Sci. USA* **108**, E962–E970.
- Cheah S. Y., Lawford B. R., Young R. M., Morris C. P. and Voisey J. (2015) Dysbindin (DTNBP1) variants are associated with hallucinations in schizophrenia. *Eur. Psychiatry* **30**, 486–491.
- Cho D., Zheng M., Min C., Ma L., Kurose H., Park J. H. and Kim K. M. (2010) Agonist-induced endocytosis and receptor phosphorylation mediate resensitization of dopamine D₂ receptors. *Mol. Endocrinol.* **24**, 574–586.
- Cho D. I., Zheng M., Min C., Kwon K. J., Shin C. Y., Choi H. K. and Kim K. M. (2013) ARF6 and GASP-1 are post-endocytic sorting proteins selectively involved in the intracellular trafficking of dopamine D₂ receptors mediated by GRK and PKC in transfected cells. *Br. J. Pharmacol.* **168**, 1355–1374.
- Christian A. E., Haynes M. P., Phillips M. C. and Rothblat G. H. (1997) Use of cyclodextrins for manipulating cellular cholesterol content. *J. Lipid Res.* **38**, 2264–2272.
- Cox M. M., Tucker A. M., Tang J., Talbot K., Richer D. C., Yeh L. and Arnold S. E. (2009) Neurobehavioral abnormalities in the dysbindin-1 mutant, sandy, on a C57BL/6J genetic background. *Genes Brain Behav.* **8**, 390–397.
- Cussac D., Newman-Tancredi A., Pasteau V. and Millan M. J. (1999) Human dopamine D₃ receptors mediate mitogen-activated protein kinase activation via a phosphatidylinositol 3-kinase and an atypical protein kinase C-dependent mechanism. *Mol. Pharmacol.* **56**, 1025–1030.
- Fu C., Chen D., Chen R., Hu Q. and Wang G. (2015) The schizophrenia-related protein dysbindin-1A is degraded and facilitates NF-kappa B activity in the nucleus. *PLoS ONE* **10**, e0132639.
- Fung S. J., Sivagnanasundaram S. and Weickert C. S. (2011) Lack of change in markers of presynaptic terminal abundance alongside subtle reductions in markers of presynaptic terminal plasticity in prefrontal cortex of schizophrenia patients. *Biol Psychiatry* **69**, 71–79.
- Ghiani C. A. and Dell'Angelica E. C. (2011) Dysbindin-containing complexes and their proposed functions in brain: from zero to (too) many in a decade. *ASN Neuro*. doi: 10.1042/AN20110010.
- Glen W. B., Jr, Horowitz B., Carlson G. C., Cannon T. D., Talbot K., Jentsch J. D. and Lavin A. (2014) Dysbindin-1 loss compromises NMDAR-dependent synaptic plasticity and contextual fear conditioning. *Hippocampus* **24**, 204–213.
- Gross G. and Drescher K. (2012) The role of dopamine D₃ receptors in antipsychotic activity and cognitive functions. *Handb. Exp. Pharmacol.* **213**, 167–210.
- Gurevich E. V., Bordelon Y., Shapiro R. M., Arnold S. E., Gur R. E. and Joyce J. N. (1997) Mesolimbic dopamine D₃ receptors and use of antipsychotics in patients with schizophrenia. A postmortem study. *Arch. Gen. Psychiatry* **54**, 225–232.
- Hinze A. H., Kline M. A., Kotha S. R., Sliman S. M., Butler E. S., Shelton A. B., Gurney T. R. and Parinandi N. L. (2012) Choice of cyclodextrin for cellular cholesterol depletion for vascular endothelial cell lipid raft studies: cell membrane alterations, cytoskeletal reorganization and cytotoxicity. *Indian J. Biochem. Biophys.* **49**, 329–341.
- Iizuka Y., Sei Y., Weinberger D. R. and Straub R. E. (2007) Evidence that the BLOC-1 protein dysbindin modulates dopamine D₂ receptor internalization and signaling but not D₁ internalization. *J. Neurosci.* **27**, 12390–12395.
- Itokawa M., Toru M., Ito K., Tsuga H., Kameyama K., Haga T., Arinami T. and Hamaguchi H. (1996) Sequestration of the short and long isoforms of dopamine D₂ receptors expressed in Chinese hamster ovary cells. *Mol. Pharmacol.* **49**, 560–566.
- Jeans A., Malins R., Padamsey Z., Reinhart M. and Emptage N. (2011) Increased expression of dysbindin-1A leads to a selective deficit in NMDA receptor signaling in the hippocampus. *Neuropharmacology* **61**, 1345–1353.
- Ji Y., Yang F., Papaleo F., Wang H. X., Gao W. J., Weinberger D. R. and Lu B. (2009) Role of dysbindin in dopamine receptor trafficking and cortical GABA function. *Proc. Natl Acad. Sci. USA* **106**, 19593–19598.
- Jia J. M., Hu Z., Nordman J. and Li Z. (2014) The schizophrenia susceptibility gene dysbindin regulates dendritic spine dynamics. *J. Neurosci.* **34**, 13725–13736.
- Jong Y. J., Kumar V. and O'Malley K. L. (2009) Intracellular metabotropic glutamate receptor 5 (mGluR5) activates signaling cascades distinct from cell surface counterparts. *J. Biol. Chem.* **284**, 35827–35838.
- Joyce J. N. and Millan M. J. (2005) Dopamine D₃ receptor antagonists as therapeutic agents. *Drug. Discov. Today* **10**, 917–925.
- Kanterman R. Y., Mahan L. C., Briley E. M., Monsma F. J. Jr, Sibley D. R., Axelrod J. and Felder C. C. (1991) Transfected D₂ dopamine receptors mediate the potentiation of arachidonic acid release in Chinese hamster ovary cells. *Mol Pharmacol.* **39**, 364–369.
- Kenakin T. P. (1982) The Schild regression in the process of receptor classification. *Can. J. Physiol. Pharmacol.* **60**, 249–265.
- Kenakin T. (2006) Testing for inverse agonism with constitutive receptor systems. *Curr. Protoc. Pharmacol.* **Chapter 9**, Unit9.5.
- Kenakin T. P. and Morgan P. H. (1989) Theoretical effects of single and multiple transducer receptor coupling proteins on estimates of the relative potency of agonists. *Mol. Pharmacol.* **35**, 214–222.
- Kim S. J., Kim M. Y., Lee E. J., Ahn Y. S. and Baik J. H. (2004) Distinct regulation of internalization and mitogen-activated protein kinase

- activation by two isoforms of the dopamine D2 receptor. *Mol. Endocrinol.* **18**, 640–652.
- Lacroix L. P., Hous M. E., Shah A. J., Hagan J. J. and Heidbreder C. A. (2003) Selective antagonism at dopamine D3 receptors enhances monoaminergic and cholinergic neurotransmission in the rat anterior cingulate cortex. *Neuropsychopharmacology* **28**, 839–849.
- Lan H., Teeter M. M., Gurevich V. V. and Neve K. A. (2009) An intracellular loop 2 amino acid residue determines differential binding of arrestin to the dopamine D2 and D3 receptors. *Mol. Pharmacol.* **75**, 19–26.
- Larimore J., Zlatic S. A., Gokhale A., Tornieri K., Singleton K. S., Mullin A. P., Tang J., Talbot K. and Faundez V. (2014) Mutations in the BLOC-1 subunits dysbindin and muted generate divergent and dosage-dependent phenotypes. *J. Biol. Chem.* **289**, 14291–14300.
- Lee S. A., Kim S. M., Suh B. K. *et al.* (2015) Disrupted-1-schizophrenia 1 (DISC1) regulates dysbindin function by enhancing its stability. *J. Biol. Chem.* **290**, 7087–7096.
- Lewis D. A., Curley A. A., Glausier J. R. and Volk D. W. (2012) Cortical parvalbumin interneurons and cognitive dysfunction in schizophrenia. *Trends Neurosci.* **35**, 57–67.
- Loiseau F. and Millan M. J. (2009) Blockade of dopamine D(3) receptors in frontal cortex, but not in sub-cortical structures, enhances social recognition in rats: similar actions of D(1) receptor agonists, but not of D(2) antagonists. *Eur. Neuropsychopharmacol.* **19**, 23–33.
- Macey T. A., Gurevich V. V. and Neve K. A. (2004) Preferential interaction between the dopamine D2 receptor and Arrestin2 in neostriatal neurons. *Mol. Pharmacol.* **66**, 1635–1642.
- Maggio R., Barbier P., Toso A., Barletta D. and Corsini G. U. (1995) Sodium nitroprusside induces internalization of muscarinic receptors stably expressed in Chinese hamster ovary cell lines. *J. Neurochem.* **65**, 943–946.
- Mannoury la Cour C., Salles M. J., Pasteau V. and Millan M. J. (2011) Signaling pathways leading to phosphorylation of Akt and GSK-3beta by activation of cloned human and rat cerebral D(2) and D(3) receptors. *Mol. Pharmacol.* **79**, 91–105.
- Marek G. J., Behl B., Bespalov A. Y., Gross G., Lee Y. and Schoemaker H. (2010) Glutamatergic (N-methyl-D-aspartate receptor) hypofrontality in schizophrenia: too little juice or a miswired brain? *Mol. Pharmacol.* **77**, 317–326.
- Marley A. and von Zastrow M. (2010) Dysbindin promotes the post-endocytic sorting of G protein-coupled receptors to lysosomes. *PLoS ONE* **5**, e9325.
- Meller E., Bohmker K., Namba Y., Friedhoff A. J. and Goldstein M. (1987) Relationship between receptor occupancy and response at striatal dopamine autoreceptors. *Mol. Pharmacol.* **31**, 592–598.
- Micale V., Cristino L., Tamburella A., Petrosino S., Leggio G. M., Di Marzo V. and Drago F. (2010) Enhanced cognitive performance of dopamine D3 receptor “knock-out” mice in the step-through passive-avoidance test: assessing the role of the endocannabinoid/endovanilloid systems. *Pharmacol. Res.* **61**, 531–536.
- Millan M. J. (2013) An epigenetic framework for neurodevelopmental disorders: from pathogenesis to potential therapy. *Neuropharmacology* **68**, 2–82.
- Millan M. J., Cussac D., Gobert A., Lejeune F., Rivet J. M., Mannoury La Cour C., Newman-Tancredi A. and Peglion J. L. (2004) S32504, a novel naphthoxazine agonist at dopamine D3/D2 receptors: I. Cellular, electrophysiological, and neurochemical profile in comparison with ropinirole. *J. Pharmacol. Exp. Ther.* **309**, 903–920.
- Millan M. J., Di Cara B., Dekeyne A., Panayi F., De Groote L., Sicard D., Cistarelli L., Billiras R. and Gobert A. (2007) Selective blockade of dopamine D(3) versus D(2) receptors enhances frontocortical cholinergic transmission and social memory in rats: a parallel neurochemical and behavioural analysis. *J. Neurochem.* **100**, 1047–1061.
- Millan M. J., Agid Y., Brune M. *et al.* (2012) Cognitive dysfunction in psychiatric disorders: characteristics, causes and the quest for improved therapy. *Nat. Rev. Drug Discovery* **11**, 141–168.
- Missale C., Nash S. R., Robinson S. W., Jaber M. and Caron M. G. (1998) Dopamine receptors: from structure to function. *Physiol. Rev.* **78**, 189–225.
- Moghaddam B. and Javitt D. (2012) From revolution to evolution: the glutamate hypothesis of schizophrenia and its implication for treatment. *Neuropsychopharmacology* **37**, 4–15.
- Moran P. M., O’Tuathaigh C. M., Papaleo F. and Waddington J. L. (2014) Dopaminergic function in relation to genes associated with risk for schizophrenia: translational mutant mouse models. *Prog. Brain Res.* **211**, 79–112.
- Mullin A. P., Sadanandappa M. K., Ma W., Dickman D. K., VijayRaghavan K., Ramaswami M., Sanyal S. and Faundez V. (2015) Gene dosage in the dysbindin schizophrenia susceptibility network differentially affect synaptic function and plasticity. *J. Neurosci.* **35**, 325–338.
- Muly C. (2002) Signal transduction abnormalities in schizophrenia: the cAMP system. *Psychopharmacol. Bull.* **36**, 92–105.
- Nagai T., Kitahara Y., Shiraki A., Hikita T., Taya S., Kaibuchi K. and Yamada K. (2010) Dysfunction of dopamine release in the prefrontal cortex of dysbindin deficient sandy mice: an in vivo microdialysis study. *Neurosci. Lett.* **470**, 134–138.
- Nair V. D. and Sealfon S. C. (2003) Agonist-specific transactivation of phosphoinositide 3-kinase signaling pathway mediated by the dopamine D2 receptor. *J. Biol. Chem.* **278**, 47053–47061.
- Nakajima S., Gerretsen P., Takeuchi H., Caravaggio F., Chow T., Le Foll B., Mulsant B., Pollock B. and Graff-Guerrero A. (2013) The potential role of dopamine D3 receptor neurotransmission in cognition. *Eur. Neuropsychopharmacol.* **23**, 799–813.
- Namkung Y. and Sibley D. R. (2004) Protein kinase C mediates phosphorylation, desensitization, and trafficking of the D2 dopamine receptor. *J. Biol. Chem.* **279**, 49533–49541.
- Namkung Y., Dipace C., Javitch J. A. and Sibley D. R. (2009a) G protein-coupled receptor kinase-mediated phosphorylation regulates post-endocytic trafficking of the D2 dopamine receptor. *J. Biol. Chem.* **284**, 15038–15051.
- Namkung Y., Dipace C., Urizar E., Javitch J. A. and Sibley D. R. (2009b) G protein-coupled receptor kinase-2 constitutively regulates D2 dopamine receptor expression and signaling independently of receptor phosphorylation. *J. Biol. Chem.* **284**, 34103–34115.
- Neve K. A., Seamans J. K. and Trantham-Davidson H. (2004) Dopamine receptor signaling. *J. Recept. Signal. Transduct. Res.* **24**, 165–205.
- Newman-Tancredi A., Cussac D., Audinot V., Pasteau V., Gavaudan S. and Millan M. J. (1999) G protein activation by human dopamine D3 receptors in high-expressing Chinese hamster ovary cells: a guanosine-5'-O-(3-[35S]thio)- triphosphate binding and antibody study. *Mol. Pharmacol.* **55**, 564–574.
- Nickl-Jockschat T., Stocker T., Markov V. *et al.* (2012) The impact of a Dysbindin schizophrenia susceptibility variant on fiber tract integrity in healthy individuals: a TBSS-based diffusion tensor imaging study. *NeuroImage* **60**, 847–853.
- Oak J. N., Lavine N. and Van Tol H. H. (2001) Dopamine D(4) and D (2L) receptor stimulation of the mitogen-activated protein kinase pathway is dependent on trans-activation of the platelet-derived growth factor receptor. *Mol. Pharmacol.* **60**, 92–103.
- Orozco I. J., Koppenssteiner P., Ninan I. and Arancio O. (2014) The schizophrenia susceptibility gene DTNBP1 modulates AMPAR synaptic transmission and plasticity in the hippocampus of juvenile DBA/2J mice. *Mol. Cell Neurosci.* **58**, 76–84.

- Papaleo F., Yang F., Garcia S., Chen J., Lu B., Crawley J. N. and Weinberger D. R. (2012) Dysbindin-1 modulates prefrontal cortical activity and schizophrenia-like behaviors via dopamine/D2 pathways. *Mol. Psychiatry* **17**, 85–98.
- Papaleo F., Burdick M. C., Callicott J. H. and Weinberger D. R. (2014) COMT-dysbindin epistatic interaction. *Mol. Psychiatry* **19**, 273.
- Purgert C. A., Izumi Y., Jong Y. J., Kumar V., Zorumski C. F. and O'Malley K. L. (2014) Intracellular mGluR5 can mediate synaptic plasticity in the hippocampus. *J. Neurosci.* **34**, 4589–4598.
- Riley B., Kuo P. H., Maher B. S. *et al.* (2009) The dystrobrevin binding protein 1 (DTNBP1) gene is associated with schizophrenia in the Irish Case Control Study of Schizophrenia (ICCS) sample. *Schizophr. Res.* **115**, 245–253.
- Rodal S. K., Skretting G., Garred O., Vilhardt F., van Deurs B. and Sandvig K. (1999) Extraction of cholesterol with methyl-beta-cyclodextrin perturbs formation of clathrin-coated endocytic vesicles. *Mol. Biol. Cell* **10**, 961–974.
- Saggu S., Cannon T. D., Jentsch J. D. and Lavin A. (2013) Potential molecular mechanisms for decreased synaptic glutamate release in dysbindin-1 mutant mice. *Schizophr. Res.* **146**, 254–263.
- Scarselli M., Armogida M., Chiacchio S., DeMontis M. G., Colzi A., Corsini G. U. and Maggio R. (2000) Reconstitution of functional dopamine D(2s) receptor by co-expression of amino- and carboxyl-terminal receptor fragments. *Eur J Pharmacol* **397**, 291–296.
- Shao L., Shuai Y., Wang J., Feng S., Lu B., Li Z., Zhao Y., Wang L. and Zhong Y. (2011) Schizophrenia susceptibility gene dysbindin regulates glutamatergic and dopaminergic functions via distinctive mechanisms in *Drosophila*. *Proc. Natl Acad. Sci. USA* **108**, 18831–18836.
- Sharma M., Celver J., Oceau J. C. and Kovoov A. (2013) Plasma membrane compartmentalization of D2 dopamine receptors. *J. Biol. Chem.* **288**, 12554–12568.
- Shintani N., Onaka Y., Hashimoto R. *et al.* (2014) Behavioral characterization of mice overexpressing human dysbindin-1. *Mol. Brain* **7**, 74.
- Skinbjerg M., Ariano M. A., Thorsell A., Heilig M., Halldin C., Innis R. B. and Sibley D. R. (2009) Arrestin3 mediates D(2) dopamine receptor internalization. *Synapse* **63**, 621–624.
- Snyder M. A. and Gao W. J. (2013) NMDA hypofunction as a convergence point for progression and symptoms of schizophrenia. *Front. Cell. Neurosci.* **7**, 31.
- Straub R. E., Jiang Y., MacLean C. J. *et al.* (2002) Genetic variation in the 6p22.3 gene DTNBP1, the human ortholog of the mouse dysbindin gene, is associated with schizophrenia. *Am. J. Hum. Genet.* **71**, 337–348.
- Subtil A., Gaidarov I., Kobylarz K., Lampson M. A., Keen J. H. and McGraw T. E. (1999) Acute cholesterol depletion inhibits clathrin-coated pit budding. *Proc. Natl Acad. Sci. USA* **96**, 6775–6780.
- Tadori Y., Forbes R. A., McQuade R. D. and Kikuchi T. (2009) Receptor reserve-dependent properties of antipsychotics at human dopamine D2 receptors. *Eur. J. Pharmacol.* **607**, 35–40.
- Talbot K. (2009) The sandy (sdy) mouse: a dysbindin-1 mutant relevant to schizophrenia research. *Prog. Brain Res.* **179**, 87–94.
- Talbot K., Eidem W. L., Tinsley C. L. *et al.* (2004) Dysbindin-1 is reduced in intrinsic, glutamatergic terminals of the hippocampal formation in schizophrenia. *J. Clin. Invest.* **113**, 1353–1363.
- Talbot K., Louneva N., Cohen J. W., Kazi H., Blake D. J. and Arnold S. E. (2011) Synaptic dysbindin-1 reductions in schizophrenia occur in an isoform-specific manner indicating their subsynaptic location. *PLoS ONE* **6**, e16886.
- Tang J., LeGros R. P., Louneva N., Yeh L., Cohen J. W., Hahn C. G., Blake D. J., Arnold S. E. and Talbot K. (2009) Dysbindin-1 in dorsolateral prefrontal cortex of schizophrenia cases is reduced in an isoform-specific manner unrelated to dysbindin-1 mRNA expression. *Hum. Mol. Genet.* **18**, 3851–3863.
- Thompson D. and Whistler J. L. (2011) Dopamine D(3) receptors are down-regulated following heterologous endocytosis by a specific interaction with G protein-coupled receptor-associated sorting protein-1. *J. Biol. Chem.* **286**, 1598–1608.
- Trost S., Platz B., Usher J. *et al.* (2013) The DTNBP1 (dysbindin-1) gene variant rs2619522 is associated with variation of hippocampal and prefrontal grey matter volumes in humans. *Eur. Arch. Psychiatry Clin. Neurosci.* **263**, 53–63.
- Ulloth J. E., Almaguel F. G., Padilla A., Bu L., Liu J. W. and De Leon M. (2007) Characterization of methyl-beta-cyclodextrin toxicity in NGF-differentiated PC12 cell death. *Neurotoxicology* **28**, 613–621.
- Varela-Gomez N., Mata I., Perez-Iglesias R., Rodriguez-Sanchez J. M., Ayesa R., Fatjo-Vilas M. and Crespo-Facorro B. (2015) Dysbindin gene variability is associated with cognitive abnormalities in first-episode non-affective psychosis. *Cogn. Neuropsychiatry.* **20**, 144–156.
- Voisey J., Swagell C. D., Hughes I. P., Lawford B. R., Young R. M. and Morris C. P. (2010) Analysis of HapMap tag-SNPs in dysbindin (DTNBP1) reveals evidence of consistent association with schizophrenia. *Eur. Psychiatry.* **25**, 314–319.
- Wang C., Buck D. C., Yang R., Macey T. A. and Neve K. A. (2005) Dopamine D2 receptor stimulation of mitogen-activated protein kinases mediated by cell type-dependent transactivation of receptor tyrosine kinases. *J. Neurochem.* **93**, 899–909.
- Watson D. J., Loiseau F., Ingallinesi M., Millan M. J., Marsden C. A. and Fone K. C. (2012) Selective blockade of dopamine D3 receptors enhances while D2 receptor antagonism impairs social novelty discrimination and novel object recognition in rats: a key role for the prefrontal cortex. *Neuropsychopharmacology* **37**, 770–786.
- Whaley B. S., Yuan N., Birnbaumer L., Clark R. B. and Barber R. (1994) Differential expression of the beta-adrenergic receptor modifies agonist stimulation of adenylyl cyclase: a quantitative evaluation. *Mol. Pharmacol.* **45**, 481–489.
- Yu P., Yang Z., Jones J. E., Wang Z., Owens S. A., Mueller S. C., Felder R. A. and Jose P. A. (2004) D1 dopamine receptor signaling involves caveolin-2 in HEK-293 cells. *Kidney Int.* **66**, 2167–2180.
- Zhang Y., Xu Y., Zhu Q., Zhao F., Luo J., Zhang X. and Wang X. (2012) Upregulation of dysbindin in temporal lobe epileptic foci of human and experimental animals. *Synapse* **66**, 622–629.
- Zidovetzki R. and Levitan I. (2007) Use of cyclodextrins to manipulate plasma membrane cholesterol content: evidence, misconceptions and control strategies. *Biochim. Biophys. Acta* **1768**, 1311–1324.